

YEW CHUNG COLLEGE
OF EARLY CHILDHOOD
EDUCATION

耀中幼教學院

PIONEERING OUR FUTURE 幼教引領未來

2024-25

PROSPECTUS
課程概覽

BACHELOR OF EDUCATION (HONOURS)
IN EARLY CHILDHOOD EDUCATION

幼兒教育榮譽學士

HIGHER DIPLOMA
IN EARLY CHILDHOOD EDUCATION

幼兒教育高級文憑

DIPLOMA IN EARLY CHILDHOOD
EDUCATION AND CARE

幼兒教育與照顧文憑

Welcome 歡迎

As a specialist in early childhood education – the only one of its kind in Asia – the College also continues to positively impact ECE development not just in Hong Kong but in the Greater Bay Area and across the Mainland. Our teachers hold aloft our beacon, and their progressive methods have created a positive ripple effect that has been recognised and applauded by the community, our partners, and government.



耀中幼教學院作為亞洲首間專注於幼兒教育的高等學院，學院在香港，甚至是內地為主的整個大灣區內，積極推動正面的幼教發展。而我們的老師作為學院的明燈，他們的漸進式教學不但帶來了正面的影響，更獲得社區、合作夥伴，以及政府的肯定及讚揚。

Dr. Betty Po-king Chan

Chairperson, YCCECE
Board of Governors

陳保琮博士

耀中幼教學院校董會主席

The education of children as a foundation of society is a widely accepted concept. Increasingly, attention is paid to Early Childhood Education (ECE) in Hong Kong and elsewhere. As the president of YCCECE, I am honoured and proud to have an opportunity to lead the very first and only specialist higher education institution in ECE in Hong Kong and in Asia.

I look forward to seeing you on our campus.

幼兒教育是社會重要的基石，在香港以至全世界都備受注視。作為耀中幼教學院的校長，我的任務是帶領這所香港以及亞洲首間及唯一專注幼教的高等教育院校，更進一步發揮其獨特的角色，為幼兒教育及整個社會的未來努力。

我熱切期望將來在校園內與你見面。

Professor Allan H.K. Yuen

President

袁海球教授

校長



Worldclass ECE Leadership

We have local and international ECE experts supporting us on all levels – from governance to academic programme development, and from research to practice. They enable YCCECE to remain at the forefront of the field.

世界級幼教顧問

耀中幼教學院由本地及國際幼教專家掌舵，從管治、學術課程發展、研究至實踐各層面均獲全方位支持，以確保我們於幼教行業中走在最前。

Contents

目錄



- | | | | |
|-----------|---|-----------|---|
| 04 | Why YCCECE
認識耀中幼教學院 | 22 | Mengxue and ECE
蒙學與幼教 |
| 06 | Students' Sharing
學生分享 | 24 | Field Experience & Overseas Exposure
幼教體驗及海外學習機會 |
| 07 | Basic Entry Requirements
基本入學要求 | 26 | Practicum
實習安排 |
| 08 | Learning Journey
幼教專才之路 | 28 | Yew Chung Yew Wah
Teachers of Tomorrow Scheme
耀中耀華明師計劃 |
| 10 | Bachelor of Education (Honours) in
Early Childhood Education
幼兒教育榮譽學士 | 30 | Research and Community Support
研究項目及社區支援 |
| 13 | Higher Diploma in
Early Childhood Education
幼兒教育高級文憑 | 32 | Student Support Services
學生支援服務 |
| 15 | Diploma in
Early Childhood Education and Care
幼兒教育與照顧文憑 | 33 | Yew Chung Approach to
Early Childhood Education
耀中幼教教學法 |
| 16 | Our People
我們的團隊 | 35 | Scholarships and Awards for Admissions
入學獎學金及獎項 |
| 20 | Partnership and Collaborations
合作伙伴 | 36 | How to Apply
入學申請程序 |
| 21 | Experiential Learning
體驗式學習 | | |

Why YCCECE

認識耀中幼教學院



1st

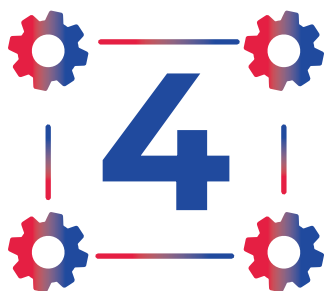
and only tertiary institution specializing in ECE in Asia

全亞洲首間及唯一專注幼兒教育的高等學院

1st

self-financing tertiary institution offers ECE teachers' training programmes in Hong Kong

全港首間自資大專院校提供幼教老師培訓課程



ECE specialised concentrations *

4個幼教專修範疇*



Graduates could obtain 4 professional qualifications required to be an ECE educator in Hong Kong[^]

畢業生可獲取4個幼教工作相關專業資格[^]



50+

Kindergartens as practicum partners

超過50間幼稚園實習伙伴

* Applicable to Bachelor's Degree programme
適用於學士課程

[^] Applicable to Bachelor's Degree and Higher Diploma programmes
適用於學士及高級文憑課程

35%+

Annual budget spent on ECE
researches and projects

每年超過35%預算用於發展幼教
相關研究和項目

90%

Students awarded with scholarships /
awards for admissions

90%學生獲得獎學金 / 獎項

40,000+

Children visited Pamela Peck Discovery Space (PPDS)
learning laboratory annually

每年超過40,000名兒童體驗「耀學園」學習實驗室

90

Years of history, with the completion of a
novel "B to B" (Baby to Bachelor)
education spectrum

超過90年歷史，
成就「嬰兒到學士」教育系譜

COLLEGE 耀中幼教學院
HOOD EDUCATION

Students' Sharing

學生分享

Our teachers used their extensive teaching experience to help us efficiently acquire professional knowledge and build a solid learning foundation during our four years at YCCECE.

Additionally, the college offers us a variety of outside-the-classroom opportunities for practical experience, including but not limited to PPDS, kindergartens, and early childhood education facilities. I completed my practicum at special education facilities as well as local and international kindergartens. Through participating in these practicum experiences, I believe I improved my observational skills, which will be useful when I enter the field of early childhood education in the future.

在學院的四年期間，老師以豐富的教學經驗，令我們有效掌握專業知識，得以奠定良好的學習基礎。此外，學院更為我們提供了不少課堂外的實戰機會，地點包括但不限於PPDS，眾多幼稚園及幼教機構。我有幸曾到國際幼稚園、本地幼稚園及特殊教育機構進行實習。我認為，透過這些實習機會，培養了自身觀察能力等的實務技巧，更能有助我未來投身於幼教行業。



Lam Yan Ying Myra, 林欣瑩
2020 BEdECE Graduate
幼兒教育榮譽學士畢業

I have joined YCCECE since 2021. During my studies, I realized the significant impact that an outstanding kindergarten teacher has on children's growth. This inspired me to become an exceptional early childhood educator. I hope to continuously enhance my educational knowledge and teaching skills to positively influence children's growth and development.

在YCCECE的學習已經踏入第三年了，我意識到一名優秀的幼稚園教師對孩子的成長有著重大的影響，這激勵著我成為一名優秀的幼兒教育工作者，我希望能夠持續提升我的教育知識和教學技能，對孩子的成長和發展產生積極的影響。

Cheung Tsun Pong, 張峻邦
HDECE Graduate
幼兒教育高級文憑畢業生



Through my journey as a Year 2 Higher Diploma in Early Childhood Education student, I have come to realize that education extends far beyond the confines of textbooks. It encompasses the essence of personal growth, exploration, and the ability to inspire and enlighten others.

作為高級文憑二年級學生的我逐漸明白：教育從不應僅限於課本所授，更應透過自身的追求和創造，用生命啟發生命。



Qin Shixin Ivy, 秦詩欣
HDECE Graduate
幼兒教育高級文憑畢業生

Basic Entry Requirements

基本入學要求

	幼兒教育榮譽學士 (BEdeCE) Year 1 Entry 一年級入學	幼兒教育高級文憑 (HdeCE)	幼兒教育與照顧文憑 (DECEC)
HKDSE 香港中學文憑試	<p>HKDSE 3.3.2.A.2</p> <p>Including Level 3 in Chinese Language and English Language, Level 2 in Mathematics, "Attained" (A) in Citizenship and Social Development, plus Level 2 in one elective/ "Attained" in one Applied Learning subject</p> <p>香港中學文憑試達 3.3.2.A.2</p> <p>包括中國語文科和英國語文科達3級；數學科達2級、公民與社會發展科取得「達標」(A)成績、及一科選修達2級/應用學習科目取得「達標」(A)成績</p>	<p>HKDSE 2.2.2.2.2</p> <p>Level 2 in 5 subjects Including Chinese Language and English Language. If the 5 subjects include Citizenship and Social Development / Applied Learning subjects, the minimum requirement is "Attained"</p> <p>香港中學文憑試達 2.2.2.2.2</p> <p>5個科目達2級，包括中國語文科和英國語文科；如該五科中包括「公民與社會發展科」/應用學習科目，必須取得「達標」(A)成績</p>	<p>Completion of Secondary Six or equivalent</p> <p>完成中六或同等學歷</p>
HKAL 香港高級程度會考	<ul style="list-style-type: none"> ◆ Grade E in 2 A-Level subjects or equivalent AS-Level subjects; and ◆ Grade E in Chinese Language and Culture and Use of English; and ◆ Grade E in 5 subjects in HKCEE including Chinese Language and English Language ◆ 2科A-Level科目或同等AS-Level科目達E級；及 ◆ 中國語文及文化科及英語運用科達E級；及 ◆ 香港中學會考5科達E級，包括中國語文科和英國語文科 	<ul style="list-style-type: none"> ◆ Grade E in 1 A-Level subject or 2 AS-Level subjects; and ◆ Grade E in 5 subjects in HKCEE including Chinese Language and English Language ◆ 1科A-Level科目/2科AS-Level科目達E級；及 ◆ 香港中學會考5科達E級，包括中國語文科和英國語文科 	N/A 不適用 ^{*3}
GCE-A-Level (AL)	<ul style="list-style-type: none"> ◆ Grade E in 2 A-Level subjects or 1 A-Level subject + 2 AS-Level subjects, other than English Language and Chinese Language; and ◆ Grade E in English Language at A/AS-Level or Grade C in English Language in GCE-O-Level/GCSE/IGCSE or Grade B in English (Second Language) ◆ 2科A-Level科目達E級，或1科A-Level科目及2科AS-Level科目達E級；不包括英國語文科及中國語文科；及 ◆ A/AS-Level 英國語文科達E級或GCE-O-Level/GCSE/IGCSE 英國語文科達C級，或GCE-O-Level/GCSE/IGCSE 英國語文科(第二語言)達B級 	<ul style="list-style-type: none"> ◆ Grade E in 1 A-Level subject, other than English Language and Chinese Language; and ◆ Grade E in English Language at A/AS-Level or Grade C in English Language in GCE-O-Level/GCSE/IGCSE or Grade B in English (Second Language) ◆ 1科A-Level科目達E級；及 ◆ A/AS-Level 英國語文科達E級或GCE-O-Level/GCSE/IGCSE 英國語文科達C級，或GCE-O-Level/GCSE/IGCSE 英國語文科(第二語言)達B級 	N/A 不適用 ^{*3}
IB Diploma IB 文憑	<ul style="list-style-type: none"> ◆ A score of 24; and ◆ Level 4 in English Language ◆ 總分達24分；及 ◆ 英國語文科達4級 	<ul style="list-style-type: none"> ◆ Level 4 in 2 IB subjects; and ◆ Level 3 in English Language ◆ 2科IB科目達4級；及 ◆ 英國語文科達3級 	N/A 不適用 ^{*3}
Mainland China 中國內地	<ul style="list-style-type: none"> ◆ Meet the 2nd cut-off line of the respective province for admission to the Mainland China's key universities in JEE; and ◆ Score of 100 in JEE English Language or English Language Proficiency comparable to IELTS score of 5.5 ◆ 普通高等學校招生全國統一考試(高考)成績達所屬省市報讀第二批本科分數線；及 ◆ 普通高等學校招生全國統一考試(高考)英語科達100分，或英語語言能力相等於雅思5.5^{*1} 	<ul style="list-style-type: none"> ◆ Completion of Senior Secondary 3; and ◆ Satisfactory results in JEE, including English Language or equivalent ◆ 完成高中三年級課程；及 ◆ 普通高等學校招生全國統一考試(高考)取得滿意成績(包括英語科)，或同等學歷 	N/A 不適用 ^{*3}
Others 其他資格	<p>Successful completion of Year 1 of recognised Associate Degree/Higher Diploma or other acceptable alternative qualifications, including non-local qualifications obtained in/outside Hong Kong</p> <p>成功完成認可副學位或高級文憑一年級，或其他在香港或海外獲得之可接受的同等學歷</p> <p>Year 3 Entry 三年級入學</p> <p>Holders of Higher Diploma awarded in the Early Childhood Education area</p> <p>持有與幼兒教育相關的高級文憑^{*2}</p>	<p>Successful completion of QF Level 3 programme e.g., Yi Jin Diploma, Diploma in Foundation Studies or other acceptable alternative qualifications, including non-local qualifications obtained in/outside Hong Kong</p> <p>成功完成資歷架構第三級課程，例如毅進文憑、基礎課程文憑，或其他在香港或海外獲得之可接受的同等學歷</p>	N/A 不適用 ^{*3}
Mature 成年學生	--	Age 21 or above 21歲或以上	Age 20 or above 20歲或以上

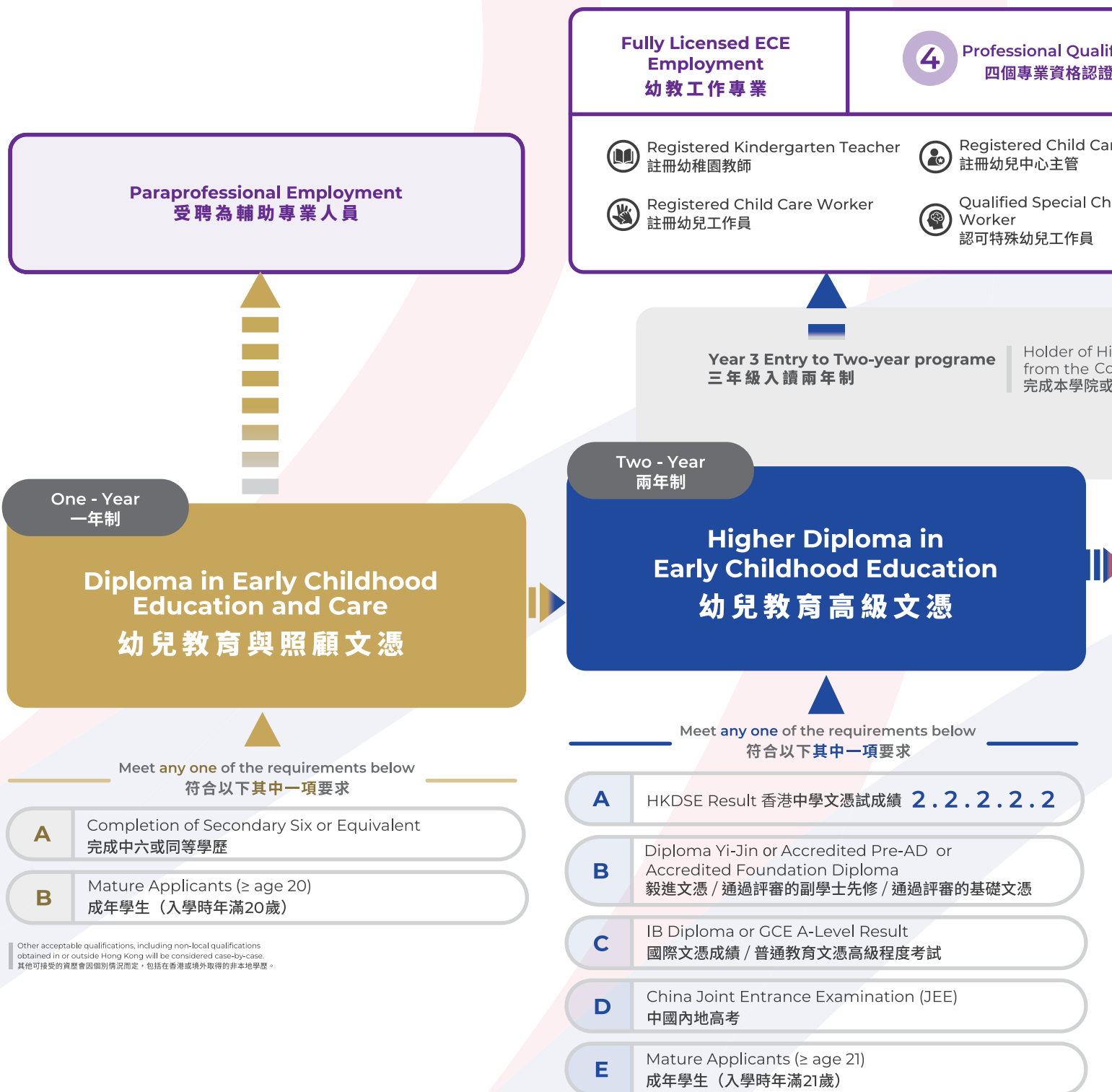
^{*1} Applicable to applicants who are holders of valid identity documents/entry permits issued by the HKSAR Government that allows them to study in Hong Kong without a study visa. 只適用於持有香港特別行政區政府簽發的有效身份證明文件/簽證來港就讀，而不須申請學生簽證之人士。

^{*2} Holders of Higher Diploma awarded in the Early Childhood Education area must also be recognised as registered kindergarten teachers by the Education Bureau of the HKSAR Government and obtain registration to work as Child Care Workers and Child Care Supervisors by the Social Welfare Department of the HKSAR Government. 持有與幼兒教育相關高級文憑的申請人，必須獲香港特區政府教育局認可為註冊幼稚園教師，並獲社會福利署認可為註冊幼兒工作人員及幼兒中心主管。

^{*3} Subject to the actual circumstances of the student, please contact the college. 根據學生實際情況而定，請與學院聯絡。

Learning Journey in YCCECE

幼教專才之路



4 Concentrations
四個專修範疇

- ◆ Special Education Needs (SEN)
特殊教育需要
- ◆ Infant & Toddler Education and Care (InTod)
嬰幼兒教育與照顧
- ◆ Innovations and New Literacies (INL)
創新與新素養
- ◆ Teaching Chinese as a Second Language (TCSL)
漢語作為第二語言教學

Other Postgraduate Programmes
其他研究生課程

ifications

re Supervisor

ild Care

Higher Diploma awarded in Early Childhood Education
College or other institutions
其他學院的幼兒教育高級文憑課程

Four - Year (Year 1 entry) / Two - Year (Year 3 entry)
四年制 (一年級入學) / 兩年制 (三年級入學)

**Bachelor of Education (Honours) in
Early Childhood Education**
幼兒教育榮譽學士

Professional Development
專業發展

**Certification Course for
Kindergarten Principals**
幼稚園校長證書課程

Meet any one of the requirements below
符合以下其中一項要求

Meet any one of the requirements below
符合以下其中一項要求

A HKDSE Result 香港中學文憑試成績 **3.3.2.A.2**

B Holder of Higher Diploma/Associate Degree/
Degree or above
高級文憑/副學士/學士或以上

C IB Diploma or GCE A-Level Result
國際文憑成績 / 普通教育文憑高級程度考試

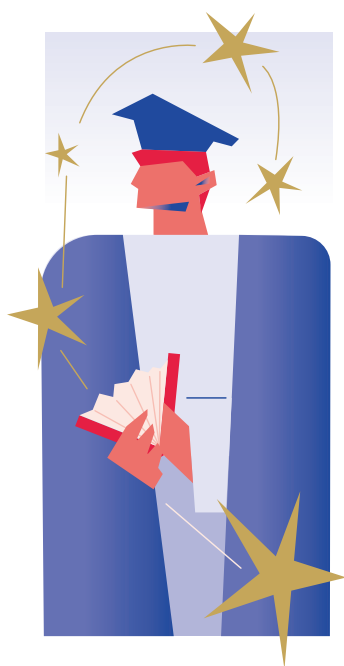
A Holder of Bachelor of Education (Hons) in Early
Childhood Education (BEdeCE) or equivalent /
Post-graduate Diploma of Education in Early
Childhood Education (PGDEECE), plus at least three
years' teaching experience in a kindergarten
持有「幼兒教育學士學位」或同等學歷/「學位教師教育文憑
(幼兒教育)」, 以及具有最少三年幼稚園教學經驗

B Serving kindergarten principals
在職幼稚園校長

Bachelor of Education (Honours) in Early Childhood Education

幼兒教育榮譽學士

Four - Year (Year 1 entry) / Two - Year (Year 3 entry)
四年制 (一年級入學) / 兩年制 (三年級入學)



The Bachelor of Education (Honours) in Early Childhood Education (BEdeCE) programme aims to nurture world-class early childhood educators who are knowledgeable in contemporary and international ECE theories and practice and can be strong advocates for children and their families.

The BEdeCE programme is a multi-entry and multi-exit programme, providing great flexibility to students and supporting lifelong learning. Those requiring pre-service training will acquire all 4 ECE Professional Qualifications in Hong Kong, enabling them to be registered with the Education Bureau (EDB) and Social Welfare Department (SWD). Those who are already ECE practitioners in the field can also pursue in-service training via a top-up degree (Year 3 entry), paving the way towards Kindergarten Principal certification.

幼兒教育榮譽學士課程旨在培育世界級的幼教工作者。修讀本課程的學生將具備穩固的理論基礎，知識層面廣闊，在掌握現代及國際上最新的幼教理論及教育法之同時，更會成為他們家庭及下一代孩子的倡導者。

幼兒教育榮譽學士學位是一個多階進出課程，為不同需要的學生提供最適切的學習路徑，推動終身學習。本專業培訓課程，已獲教育局及社會福利署認可，畢業生可直接獲取於香港從事幼教工作者必備的四個專業資格。此外，註冊幼稚園教師可直接入讀學士學位課程的三年級，以便完成學士學位課程後，將來修讀幼稚園校長證書課程。

Programme Objectives

- ◆ Engage in lifelong learning with capability for independent learning and critical thinking
- ◆ Pursue career, further study and ongoing professional development
- ◆ Enhance career objectives in ECE or related areas
- ◆ Demonstrate ability to critically review, consolidate and extend systematic knowledge and skills about the holistic nature of child development
- ◆ Function as effective team members of a multidisciplinary team and exercise appropriate judgment in the planning, design, evaluation, and management of activities in various areas of involvement
- ◆ Demonstrate leadership and the ability to apply knowledge and skills in ECE to meet the increasingly diverse needs of children and families in Hong Kong, Mainland China, and the world

課程目標

- ◆ 參與終身學習，具備獨立學習和批判性思維的能力
- ◆ 追求事業、持續進修和專業發展
- ◆ 提高幼教或相關領域的職業目標
- ◆ 具有批判性地審查、鞏固和擴展關於兒童發展的整體性的系統知識和技能的能力
- ◆ 作為多學科團隊的有效團隊成員，在各個參與領域的活動的規劃、設計、評估和管理中做出適當的判斷
- ◆ 展示領導能力和應用幼教知識和技能的能力，以滿足香港、中國內地和世界各地兒童和家庭日益多樣化的需求



Professional Qualifications

- ◆ Recognised by the Education Bureau (EDB) for the Certificate in Early Childhood Education [C(ECE)] qualification, and as meeting the requirement for registration as Kindergarten Teachers under the Education Ordinance
- ◆ Recognised by the Social Welfare Department (SWD) for registration as Child Care Workers and Child Care Supervisors
- ◆ Be qualified as Special Child Care Workers with the Social Welfare Department (SWD)

專業資格

- ◆ 符合教育局對「合格幼稚園教師」的培訓要求，及可註冊為幼稚園教師
- ◆ 獲社會福利署認可註冊為「幼兒工作人員」及「幼兒中心主管」
- ◆ 獲社會福利署認可之「特殊幼兒工作人員」資歷

To better prepare myself in meeting the all-graduate kindergarten teaching force trend and the requirement of pursuing kindergarten principalship in the future, I decided to continue my study at YCCECE after graduating from the Higher Diploma programme. As a Bachelor's Degree student, we received an advanced practicum opportunity that lasted for 8 weeks. Also, we got the chance to participate in overseas exchange tours which broadened our horizons and developed our global ECE perspective.

為了就未來幼师學位化做好準備及為日後修讀幼稚園校長證書課程鋪路，於耀中幼教學院完成幼兒教育高級文憑後，我選擇繼續於學院修讀榮譽學士課程。課程的高年級同學除了可享有8星期高階實習機會外，更可以到外國交流，了解其他地方的幼教發展，開拓視野。



Chan Ka Man Carmen, 陳加旻
2020 BEdECE (Full-time Graduate)
2020 幼兒教育榮譽學士(全日制) 畢業

Employed at Yew Chung International School (Shanghai) through the Yew Chung Yew Wah Teachers of Tomorrow Scheme
透過「耀中耀華明師計劃」受轉於上海耀中國際幼稚園



Core Curriculum Components

Core Curriculum Components	QF Credits
Child Studies	30
Children with Diverse Needs	40
Curriculum in ECE	70
Educational Management and Sustainable Development of ECE Settings	20
Foundations of ECE	40
Parental Involvement in ECE	20
Practicum	112
Capstone Project	69
Common Core Curriculum	140
	541

Specialised Concentrations

Special Education Needs (SEN)	
Infant and Toddler Education and Care (INTOD)	40
Innovations and New Literacies (INL)	
Teaching Chinese as a Second Language (TCSL)	
Total QF Credits	581

Career Opportunities

- ◆ Kindergarten Teacher/Child Care Worker
- ◆ Executive in early childhood education settings
- ◆ Kindergarten Principal/Child Care Supervisor
- ◆ Research opportunities in tertiary institutions or other organisations

就業前景

- ◆ 幼稚園教師/幼兒工作人員
- ◆ 幼兒教育機構行政主管
- ◆ 幼稚園校長/ 幼兒中心主管
- ◆ 於高等院校或其他機構從事學術研究

課程主要組成部份

課程主要組成部份	資歷學分
兒童研究	30
多元學習需要兒童	40
幼兒教育課程	70
幼兒教育管理與可持續發展	20
幼兒教育基礎	40
幼兒教育中的家長參與	20
實習	112
專題研究項目	69
共同核心課程	140
	541

專修範疇

特殊教育需要 (SEN)	
嬰幼兒教育與照顧 (INTOD)	40
創新與新素養 (INL)	
漢語作為第二語言教學 (TCSL)	
總資歷學分	581



QF Level 5
資歷架構第 5 級

Qualification Framework (QF) Information
QR Registration Number: 18/000441/L5
Registration Validity Period:
01/09/2018 - 31/08/2028
資歷架構資料
資歷名冊: 18/000441/L5
登記有效期: 01/09/2018 - 31/08/2028

Choice of Concentrations in Year 3

升讀三年級可選擇不同專修範疇



Other than the General ECE concentration, full-time BEdeECE students can choose one of the concentrations when they enter Year 3 and gain a specific area of expertise, which prepares them well to be ECE experts.

Current ECE workers who have obtained the qualifications of kindergarten teacher, child care worker and child care centre supervisor can also obtain the professional qualification of special child care worker after completing this course.

幼兒教育榮譽學士（全日制）的學生於升讀三年級時將可以選擇其中一個專修範疇，並修讀相關專修科目，進一步加強專科專業知識，成為幼教專家。

已獲取幼稚園老師、幼兒工作員及幼兒中心主管資格的現職幼教工作者，於完成本課程後亦可獲取特殊幼兒工作員的專業資格。

1 Special Education Needs (SEN)

- ◆ Current Trends in Inclusion
- ◆ Instructional Strategies for Children with Multiple Disabilities
- ◆ Intervention Strategies for Supporting Children's Communication Skills
- ◆ Developing Life Skills: Assistive Technology for Young Children with Physical Disabilities

特殊教育需要 (SEN)

- ◆ 融合教育的當前發展
- ◆ 多重障礙兒童的教學策略
- ◆ 支援兒童溝通技能的有效干預策略
- ◆ 生活技能發展：肢體障礙兒童的輔助性科技

2 Infant and Toddler Education and Care (INTOD)

- ◆ Child Development in the Context of Families, Schools and Communities
- ◆ Assessment Purposes and Approaches for Describing
- ◆ Infants and Toddlers in their Environments
- ◆ Curriculum and Intentional Planning of Interventions for Infants and Toddlers
- ◆ Collaborative Leadership for Infant-Toddler Systems

嬰幼兒教育與照顧 (INTOD)

- ◆ 家庭、學校與社區背景下的兒童發展
- ◆ 在日常環境中的嬰幼兒評估目標與方法
- ◆ 嬰幼兒課程及干預設計
- ◆ 嬰幼兒系統的協作領導模式

3 Innovations and New Literacies (INL)

- ◆ Nature and Living
- ◆ Play and Learning in the 21st Century
- ◆ Mathematics in Early Childhood Education
- ◆ New Literacies in Early Childhood Education

創新與新素養 (INL)

- ◆ 自然與生活
- ◆ 21世紀遊戲與學習
- ◆ 幼兒數學教育
- ◆ 幼兒教育新素養

4 Teaching Chinese as a Second Language (TCSL)

- ◆ Second Language Teaching and Learning in Hong Kong
- ◆ Understanding Chinese Language Learning in Young Children
- ◆ Pedagogy in Teaching Chinese as a Second Language
- ◆ Curriculum and Teaching Material Design for TCSL

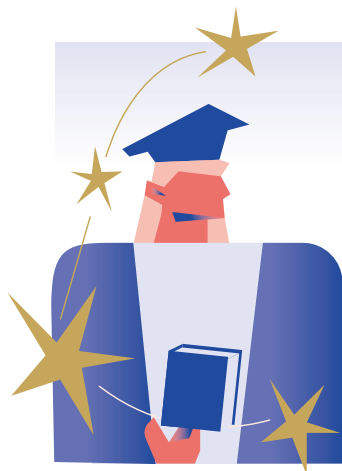
漢語作為第二語言教學 (TCSL)

- ◆ 香港第二語言教育學
- ◆ 幼兒的漢語學習
- ◆ 漢語作為第二語言教學法概論
- ◆ 漢語作為第二語言的課程與教材設計

Higher Diploma in Early Childhood Education

幼兒教育高級文憑

2-year full-time
兩年全日制



The 2-Year Higher Diploma in Early Childhood Education (HDECE) is a pre-service training programme aiming to provide high quality pre-service training in ECE with an international and contemporary focus, as well as with a foundation in General Education (including Languages). The Programme is to prepare students with solid knowledge and competency for further education and careers. Moreover, because of the College's policy of using 100% English as the medium of instruction (except for Chinese courses), it has provided a particularly valuable opportunity to the Non-Chinese Speaking students. Graduates will gain all 4 ECE qualifications in Hong Kong, eligible to work as Registered Kindergarten Teachers with the Education Bureau (EDB), Child Care Workers/Supervisors and Special Child Care Workers with the Social Welfare Department (SWD).

兩年制的幼兒教育高級文憑課程屬職前培訓課程，旨在為學生提供以國際化和現代化為重點的高質素幼兒教育職前培訓，以及通識教育（包括語言）的基礎。課程為學生提供紮實的知識和能力，為他們繼續學習和未來的職業生涯做好準備。此外，學院採用100%英語作為教學語言（中文課程除外）的政策，為非華語學生提供了非常寶貴的學習機會。畢業生將獲取四個專業資格包括：教育局認可之註冊幼稚園老師，社會福利署認可的幼兒工作人員、幼兒中心主管及特殊幼兒工作人員。

Programme Objectives

- ◆ Engage in lifelong learning with capability for independent learning and critical thinking
- ◆ Pursue further study, professional development and /or career in Early Childhood Education
- ◆ Acquire and demonstrate knowledge and skills about children's development in the early years, both typical and atypical, and the role of contemporary teaching practices, culture, and the family as influences that shape children's development
- ◆ Function as effective team members of a multidisciplinary team and contribute to and coordinate activities in various areas
- ◆ Demonstrate competent language ability, IT, interpersonal and other generic skills as well as awareness of many issues of Hong Kong, China and the world, including professional standards and ethics guiding early childhood education and care

課程目標

- ◆ 具備獨立學習和批判性思維的能力，繼續終身學習之旅
- ◆ 在幼教領域繼續深造、專業發展及就業
- ◆ 了解並展示有關兒童早期發展（典型或非典型）的知識和技能，以及現代化教學實踐、文化和家庭對兒童發展的影響
- ◆ 在跨學科團隊中，有效地為不同領域的活動作出貢獻及協調
- ◆ 展現良好的語言能力、資訊科技、人際交往和其他通用技能，以及對中國香港、內地和世界問題的認識，具備指導幼兒教育和照顧的專業標準和道德規範

Curriculum Components *

Curriculum Components *	QF Credits
Child Studies	24
Foundations of ECE	24
Curriculum in ECE	60
Children with Diverse Needs	48
Educational Management and Sustainable Development of ECE Settings	12
Parental Involvement in ECE	24
Practicum	42
Common Core Curriculum	106
Total QF Credits	340

* Subject to the final approval from HKCAAVQ

課程組成部分 *

課程組成部分 *	資歷學分
兒童研究	24
幼兒教育基礎	24
幼兒教育課程	60
多元學習需要兒童	48
幼兒教育管理與可持續發展	12
幼兒教育中的家長參與	24
實習	42
共同核心課程	106
總資歷學分	340

* 有待香港學術及職業資歷評審局確認

HDECE students will have practicum opportunities in selected premium international and local kindergartens, including exclusive placement at Yew Chung International School (preschools).

Students will have the opportunities to be taught by world-class visiting scholars and to attend international conferences to broaden their global perspectives in ECE.

幼兒教育高級文憑畢業生將獲安排到國際學校幼稚園、本地幼稚園及特殊教育機構進行實習，當中包括獨家耀中國際學校（幼稚園）的實習機會。

學生亦會獲世界知名的幼教專家親自授教，並有機會出席國際研討會，以加強學生們在幼教方面的全球視野。

The College offers us diverse learning experiences beyond ECE theories such as creative arts and STEM education. These stimulate our understanding of children's learning needs from their own point of view. The learning journey is truly rewarding as we learn to see the world from a child's perspective and it helps us craft child-centered activities that fit their interest."



感謝學院提供多元化的課堂學習經驗，例如Creative Arts及STEM讓我以第一身感受了解幼兒的學習需要。這些經驗令我更了解如何從幼兒的角度思考，並有助我製造幼兒感興趣和有利他們發展的活動。

Fok Suen Yau Sylvester, 霍宣佑

2021 HDECE Graduate, 2019 DECS Graduate

2021 幼兒教育高級文憑畢業生、2019 幼兒學文憑畢業生

Professional Qualifications

- ◆ Recognised by the Education Bureau (EDB) for the Certificate in Early Childhood Education [C(ECE)] qualification, and as meeting the requirement for registration as Kindergarten Teachers under the Education Ordinance
- ◆ Recognised by the Social Welfare Department (SWD) for registration as Child Care Workers and Child Care Supervisors
- ◆ Be qualified as Special Child Care Workers with the Social Welfare Department (SWD)

專業資格

- ◆ 符合教育局對「合格幼稚園教師」的培訓要求，及可註冊為幼稚園教師
- ◆ 獲社會福利署認可註冊為「幼兒工作員」及「幼兒中心主管」
- ◆ 獲社會福利署認可之「特殊幼兒工作員」資歷

Career Opportunities

- ◆ Kindergarten Teacher/Child Care Worker
- ◆ Executive in early childhood education settings
- ◆ Kindergarten Principal/Child Care Supervisor

就業前景

- ◆ 幼稚園教師/幼兒工作員
- ◆ 幼兒教育機構行政主管
- ◆ 幼稚園校長/ 幼兒中心主管



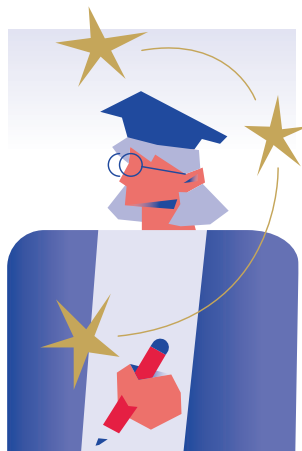
QF Level 4
資歷架構第 4 級

Qualification Framework (QF) Information
QR Registration Number: 18/000466/L4
Registration Validity Period: 29/06/2018 - 31/08/2026
資歷架構資料
資歷名冊: 18/000466/L4
登記有效期: 29/06/2018 - 31/08/2026

Diploma in Early Childhood Education and Care

幼兒教育與照顧文憑

1-year full-time
一年全日制



The **DECEC** Programme is a foundational programme for all secondary school leavers to prepare them for further study/work, and to provide balanced general education study and introductory knowledge and skills in the area of ECE.

Besides, the 100% English Medium of Instruction environment at YCCECE provides ample opportunities for students to practise and raise their English proficiency which gives them a competitive edge for further study or employment.

幼兒教育與照顧文憑為基礎課程，適合所有中六畢業生，並授予學生通用知識及有關幼兒教育範疇的知識和技巧，為進一步學習及/或工作做好準備。

另外，耀中幼教學院的全英文教學環境能大大提升學生的英語水平，有助學生不論在升學及就業方面增加競爭力。

Programme Objectives

- ◆ Engage in lifelong learning with the capability for independent learning
- ◆ Pursue further study in local QF Level 4 programmes or in overseas programmes and/or work in various fields including Early Childhood Education and Care
- ◆ Function as an effective member within a learning community

課程目標

- ◆ 具備獨立學習的能力，繼續終身學習之旅
- ◆ 銜接本地資歷架構第4級課程或海外課程，及/或在幼兒教育與照顧不同領域工作
- ◆ 在學習共同體中有效發揮作用

Curriculum Components

Curriculum Components	QF Credits
Early Childhood Education and Care	60
Foundation of ECE	12
Placement	22
Languages	40
Total QF Credits	134

課程組成部分

課程組成部分	資歷學分
幼兒教育與照顧	60
幼兒教育基礎	12
實踐	22
語言	40
總資歷學分	134

Graduation Pathways

- ◆ Articulate to 2-year full-time Higher Diploma programme of the College
- ◆ Articulate to Higher Diploma or Associate Degree programmes offered in Hong Kong or overseas countries

升學/就業途徑

- ◆ 銜接本學院全日制高級文憑課程
- ◆ 銜接香港或海外高級文憑或副學士課程

The Diploma in Early Childhood Studies (DECS) Programme helped us build our ECE foundation through learning basic ECE theories and concepts. During my 2-week placement, I was truly inspired by the teachers who really live the life of an ECE educator. The experience motivated me to be a great ECE educator in the future.



修讀幼兒學文憑課程不但讓我認識幼教的基本理論，於幼稚園考察的兩星期中更令我感受到一班現職幼稚園老師的熱誠，讓我更希望成為與他們一樣優秀的幼教工作者。

Saana Batool Iqbal

2021 HDECE Graduate, 2019 DECS* Graduate
2021 幼兒教育高級文憑畢業生、2019 幼兒學文憑畢業生



QF Level 3
資歷架構第3級

Qualification Framework (QF) Information
QR Registration Number:
24/000321/L3

Registration Validity Period:
01/09/2024 - 31/08/2026

資歷架構資料

資歷名冊: 24/000321/L3

登記有效期: 01/09/2024 - 31/08/2026

* This programme will supersede the current programme - "Diploma in Early Childhood Studies".
該課程將會取代現有的「幼兒學文憑」課程。

Our People 我們的團隊

WORLD CLASS ECE LEADERSHIP 世界級幼教顧問

At YCCECE, we have global leaders and scholars in ECE supporting us on all levels – from governance to academic programme development, and from research to practice. They share our vision and passion, enabling YCCECE to remain at the forefront of the field.

耀中幼教學院的校務及教務管理、學術課程發展、研究以至專業實踐，均由本地及國際幼教專家掌舵，並秉承耀中的願景與熱誠，確保學院站在業界的最新發展的最前線。



Dr. Betty Po-king Chan
Chairperson,
YCCECE Board of Governors

陳保琼博士
耀中幼教學院校董會主席

- ◆ Honorary Degree of Doctor of Humane Letters, University of Illinois Urbana-Champaign
美國伊利諾大學香檳分校榮譽人文學博士
- ◆ Honorary Fellowship, Education University of Hong Kong
香港教育大學榮譽院士銜
- ◆ Honorary Degree of Doctor of Laws, University of Bath
英國巴斯大學榮譽法學博士
- ◆ President, Pacific Early Childhood Education Research Association (PECERA) Hong Kong Chapter
太平洋區幼兒教育研究學會 (香港分部) 主席
- ◆ President, PECERA International (2012-2018)
太平洋區幼兒教育研究學會主席 (2012-2018)



Professor Susan Fowler
Susan Fowler 教授

- ◆ Honorary Advisor, YCCECE
耀中幼教學院榮譽顧問
- ◆ BEdECE Programme Developer, YCCECE
幼兒教育(榮譽)學士課程發展顧問

- ◆ Professor Emerita (Special Education), College of Education, University of Illinois Urbana-Champaign
美國伊利諾大學香檳分校教育系榮休教授(特殊教育)
- ◆ Council for Exceptional Children (CEC) J.E. Wallace Wallin Special Education Lifetime Achievement Award
特殊兒童委員會J.E. Wallace Wallin 特殊教育終生成就獎



Ms. Shalini Mahtani, MBE
馬夏邇女士, MBE

- ◆ Honorary Advisor, YCCECE
耀中幼教學院榮譽顧問
- ◆ Founder and Chief Executive Officer, The Zubin Foundation
小彬紀念基金會創辦人兼行政總裁



Professor Iram Siraj, OBE
Iram Siraj 教授, OBE

- ◆ Honorary Advisor, YCCECE
耀中幼教學院榮譽顧問

- ◆ Professor of Child Development Education and Senior Research Fellow, Department of Education, University of Oxford, U.K.
英國牛津大學教育系兒童發展教育教授及高級研究員
- ◆ Research Professor at the University of Wollongong, NSW
澳洲伍倫貢大學研究教授



Professor Ting Chuen Pong
龐鼎全教授

- ◆ Honorary Advisor, YCCECE
耀中幼教學院榮譽顧問

- ◆ Vice-President for Administration and Business, Professor, Department of Computer Science and Engineering, The Hong Kong University of Science and Technology
香港科技大學副校長(行政)、計算機科學及工程學系教授



Professor Kathy Sylva, OBE
Kathy Sylva 教授, OBE

- ◆ Member, YCCECE Board of Governors
耀中幼教學院校董會成員

- ◆ Honorary Research Fellow and Professor of Educational Psychology, Department of Education, University of Oxford, U.K.
英國牛津大學教育系榮譽研究院士及教育心理教授
- ◆ OBE 2008, for 'services to children and families'
2008年以兒童及家庭的優秀研究服務，榮獲大英帝國官佐勳章
- ◆ Honorary Doctorates from the University of Gothenburg, Oxford Brookes University, and the Open University, U.K.
哥德堡大學、牛津布魯克斯大學及英國公開大學榮譽博士

INSPIRED INTERNATIONAL ACADEMIC TEAM

熱忱的國際學術團隊

Our strong team of global academics and administrators hails from the USA, Singapore, South Africa, Hong Kong and Mainland China.

學院擁有來自世界各地的專業教學及行政團隊，當中包括美國、新加坡、南非、香港及中國內地。



Prof. Allan Yuen
President
袁海球教授
校長

- ◆ PhD, La Trobe University, Australia
澳洲樂卓博大學高級電腦科學研究文憑、哲學博士
- ◆ DipChSt, CGST
中國神學研究院基督教研究文憑
- ◆ BA, PGDE, M.A.(Ed), The Chinese University of Hong Kong
香港中文大學文學士、學位教師教育文憑、文學碩士 (教育)



Prof. Eric Cheng
Vice-President
(Academic)
鄭志強教授
副校長 (學術)

- ◆ Doctor of Education in Education Management, The University of Leicester, United Kingdom
英國萊斯特大學教育管理博士
- ◆ Master of Science, The Hong Kong Polytechnic University, Hong Kong
香港理工大學理學碩士
- ◆ Master of Social Science, The Chinese University of Hong Kong
香港中文大學社會科學碩士



Dr. Frank LAM
Vice-President
(Administration)
林文全博士
副校長 (行政)

- ◆ Doctor of Business Administration, The University of Newcastle, Australia
澳洲紐卡素大學工商管理博士
- ◆ Master of Business Administration, The University of Sydney, Australia
澳洲悉尼大學工商管理碩士
- ◆ Bachelor of Science in Electronic Engineering, The Chinese University of Hong Kong
香港中文大學電子工程理學士



Dr. Crystal Zheng
鄭婉薇博士

- ◆ Assistant Professor 助理教授
- ◆ Dean of Studies 學務長

- ◆ PhD, Middlesex University
英國密德薩斯大學博士
- ◆ MA, The Hong Kong Polytechnic University
香港理工大學碩士
- ◆ BA, Guangzhou University
廣州大學學士

Research Interests 研究興趣

Linguistics and Phonological Awareness
語言學/ 語音意識

Linguistics and Orthographic Awareness
語言學/ 字形結構意識

Teaching Chinese as a Foreign Language
漢語作為外語教學

Chinese Linguistics and Literature
漢語言及文學



Dr. Brad Y.W. Chan
陳裕榮博士

- ◆ Assistant Professor 助理教授
- ◆ Co-leader- Jockey Club 'CoolPlay' Project
項目聯席總監- 賽馬會「智·幼·趣」計劃

- ◆ DPhil, The University of Oxford
英國牛津大學博士
- ◆ MSc, The University of Oxford
英國牛津大學碩士
- ◆ BEd, The University of Hong Kong
香港大學學士

Research Interests 研究興趣

Psycholinguistics
心理語言學

Child Development
兒童發展學

Phonological Awareness
語音意識

Learning to Read in Different Orthographies
正字法與閱讀的關係

Bilingualism
雙語研究



Dr. Liu Qing
劉晴博士

- ◆ Assistant Professor 助理教授
- ◆ Assistant Dean of Studies 助理學務長
- ◆ Programme Manager- Bachelor of Education (Hons) in Early Childhood Education
課程主任 - 幼兒教育榮譽學士學位

- ◆ PhD, The University of Hong Kong
香港大學博士
- ◆ MA, Tufts University
美國塔夫茲大學碩士
- ◆ BMed, Su Yat-Sen University
中山大學學士

Research Interests 研究興趣

Autism Spectrum Disorder
自閉症譜系障礙

Parent-mediated Intervention (PMI)
家長引導介入法

Telehealth-supported PMI
遠距醫療支援下的家長引導介入法

PMI in Low- or Middle-income Countries
家長引導介入法在中/低收入國家的實踐

Implementation Science
應用科學



Dr. Ana Aracelly Olguín
Ana Aracelly Olguín 博士

Assistant Professor 助理教授

- ◆ PhD, Curriculum & Instruction, University of Illinois Urbana Champaign 美國伊利諾大學香檳分校博士
- ◆ EdS, University of Florida 美國佛羅里達大學學士
- ◆ MS, Nova Southeastern University 美國諾瓦東南大學碩士
- ◆ BA, Florida International University 美國佛羅里達國際大學學士

Research Interests 研究興趣

Refugee & Immigrant Education Birth to Five 出生到五歲的難民和移民教育
Pre-Service Teacher Education 職前教師教育
Play in Early Childhood 幼兒期遊戲中學習
Mathematics in Early Childhood 幼兒期數學學習
Families in Early Childhood Education 幼兒期家庭學習



Ms. Serena Mengran Liu
劉萌然女士

Assistant Professor 助理教授

- ◆ PhD. Candidate, University of Auckland 奧克蘭大學(新西蘭) 博士
- ◆ HDECE, Yew Chung College of Early Childhood Education 耀中幼教學院高級文憑
- ◆ MS, Pennsylvania State University 賓夕法尼亞州立大學碩士
- ◆ BA, Southern Medical University 南方醫科大學學士

Research Interests 研究興趣

Post-Intentional Phenomenology 現象學
Teachers' Collaborative Learning (TCL) 幼兒教師的合作學習
Professional Learning & Development in ECE 專業發展與學習
Professional Learning Communities 專業學習社區
Applying post-structural ideas in educational studies 後結構主義思想在教育研究中的應用



Dr. Phoebe Cheung
張蓓蓓博士

Assistant Professor- Occupational Therapy 助理教授- 職業治療

- ◆ PhD, Monash University 澳洲蒙納殊大學博士
- ◆ MA, University of Southern California 美國南加州大學碩士
- ◆ BSc OT, University of Toronto 加拿大多倫多大學學士
- ◆ OT @, SIPT Cert.

Research Interests 研究興趣

Special Education 特殊教育
Sensory Integration 感官融合
Social Skills Training 社交技能培訓
Outcome Measures of Pediatric Assessment Tools 兒科評估工具成效評測
Autism Spectrum Disorder 自閉症譜系障礙
Quality of Life 生活質素
Technology Education 科技教育



Dr. Zhang Ye
張擘博士

Assistant Professor 助理教授

- ◆ PhD, The University of Auckland 奧克蘭大學哲學博士
- ◆ MA, The Chinese University of Hong Kong 香港中文大學教育學碩士
- ◆ BeD, Zhejiang Normal University 浙江師範大學教育學學士

Research Interests 研究興趣

Early Childhood Mathematics 早期數學
Children's Play 兒童遊戲
Children's Informal Learning 幼兒的非正式學習
Socio-cultural Theory 社會文化理論
Affordance Theory 可供性理論



Dr. Elaine Lau
劉綺雯博士

Head (Research Office) 研究辦公室主管
Assistant Professor (Linguistics) 助理教授 (語言學)

- ◆ PhD, The University of Hawai'i at Mānoa 夏威夷大學馬諾阿分校語言學博士
- ◆ Advanced Graduate Certificate in Second Language Studies, The University of Hawai'i at Mānoa 夏威夷大學馬諾阿分校第二語言研究高級研究生證書
- ◆ MPhil, The University of Hong Kong 香港大學語言學碩士
- ◆ Bachelor in Cognitive Science, The University of Hong Kong 香港大學認知科學學士

Research Interests 研究興趣

Language acquisition 語言習得
Cognitive development 認知發展
Bi-/multilingualism 雙語制/多語制
Mechanisms of information processing 訊息處理理論



Dr. Cathy O.Y. Hung
洪安盈博士

Assistant Professor 助理教授

- ◆ PhD, The University of Hong Kong 香港大學博士
- ◆ GDip, ECE, RMIT University 澳洲皇家墨爾本理工大學研究文憑
- ◆ MEd, University of Bristol 英國布里斯托大學碩士
- ◆ BSocSC, City University of Hong Kong 香港城市大學學士

Research Interests 研究興趣

Reading Processes 閱讀過程
Literacy Acquisition 讀寫習得
Executive Functions 執行功能
Instructional Approaches 教學方法



Dr. Melinda Wang
王炫博士

Assistant Professor 助理教授

- ◆ PhD, City University of Hong Kong 香港城市大學博士
- ◆ MA, City University of Hong Kong 香港城市大學碩士

Research Interests 研究興趣

Systemic Functional Grammar 系統功能語法
Text Linguistics 話語語言學
Multimodal Discourse Analysis 多模態話語分析
Language and Education 語言與教育



Dr. Hui Ching
許楨博士

Director, Mengxue Institute, YCCECE
耀中幼教學院 · 中華蒙學苑苑長

- ◆ PhD, Centre of Asian Studies, The University of Hong Kong
香港大學亞洲研究中心博士
- ◆ MSc in Social Sciences, London School of Economics and Political Science
倫敦政經學院社會科學碩士
- ◆ MPhil, BA, The University of Hong Kong
香港大學文學院學士、碩士



Ms. Nancy Ting
丁鏽楓女士

Senior Lecturer 高級講師

- ◆ MEd, University of Sydney
澳洲悉尼大學碩士
- ◆ PGDE, The University of Hong Kong
香港大學學位教師教育深造文憑
- ◆ BA, The University of Hong Kong
香港大學學士



Dr. Bradley D. Mellen

Senior Lecturer 高級講師

- ◆ EdD, University of Durham
英國杜倫大學博士
- ◆ MA, The University of Hong Kong
香港大學碩士
- ◆ BA, University of Colorado
美國科羅拉多大學學士



Ms. Mary Ann Hood

Senior Lecturer 高級講師

- ◆ MEd (University of Fort Hare, SA)
南非福特哈爾大學碩士
- ◆ BA (Rhodes University, SA)
南非羅德斯大學學士
- ◆ BA (University of South Africa, SA)
南非大學學士



Ms. Rohnii Tse
謝冠寶女士

Senior Lecturer 高級講師

- ◆ Master of Speech Language Pathology, University of Sydney
澳洲悉尼大學碩士
- ◆ MSc, The University of Manchester
英國曼徹斯特大學碩士



Ms. Esther Y.H. Chong
莊涓嫻女士

Lecturer 講師

- ◆ M.A., Cornerstone University
美國基石大學碩士
- ◆ B.Sc., Great Lakes Christian College
美國大湖基督學院學士



Ms. Payal M. Mansukani

Lecturer 講師
Programme Manager - 課程主任 -
Diploma in Early Childhood Studies 幼兒學文憑

- ◆ MEd, The University of Hong Kong
香港大學碩士
- ◆ BA, Middlesex University
英國密德薩斯大學學士



Ms. Carrie Ng
伍倩儂女士

Lecturer 講師

- ◆ MA, The University of Hong Kong
香港大學碩士
- ◆ BA & BEd, The University of Hong Kong
香港大學學士



Ms. Ruoyu Wen
文若予女士

Lecturer 講師
Programme Manager - 課程主任 -
Higher Diploma in Early Childhood Education 幼兒教育高級文憑

- ◆ MA, Teachers College, Columbia University
美國哥倫比亞大學碩士
- ◆ BA, China Foreign Affairs University
中國外交學院學士



Ms. Maggie P.C. Chan
陳佩芝女士

Lecturer (Practice) 講師(專業實踐)
Practicum Manager 實習統籌經理

- ◆ MA, Early Childhood Education
The Chinese University of Hong Kong
香港中文大學碩士
- ◆ BEd (Hons), Early Childhood Education
The Education University of Hong Kong
香港教育大學學士



Ms. Joey Chan
陳可兒女士

Lecturer (Practice) 講師(專業實踐)

- ◆ MSc, Counselling, City University of Hong Kong
香港城市大學碩士
- ◆ BEd (Hons), Early Childhood Education
The Education University of Hong Kong
香港教育大學學士

Partnership and Collaborations

合作伙伴

Yew Chung College of Early Childhood Education actively exchanges and collaborates with the Mainland and international early childhood education academia and related institutions to promote the development of early childhood education and seize opportunities, providing opportunities for students and teachers to learn and develop and keep pace with the times.

耀中幼教學院與內地及國際幼教學術界及相關機構積極交流和合作，促進幼教發展及抓緊機遇，為學生及教學人員提供機會學習及發展機會，與時並進。

PARTNERSHIP AND COLLABORATIONS

合作伙伴

澳洲迪肯大學	Deakin University Australia
福建師範大學	Fujian Normal University
香港兒科基金	Hong Kong Paediatric Foundation
江門幼兒師範高等專科學校	Jiangmen Preschool Education College
嶺南大學	Lingnan University
南通大學	Nantong University
寧波幼兒師範高等專科學校	Ningbo Childhood Education College
青島西海岸新區中德應用技術學校	Qingdao West Coast New Area Sino-German Applied Technology School
上海師範大學	Shanghai Normal University
蘇州幼兒師範高等專科學校	Suzhou Early Childhood Education College
澳洲伍倫貢大學	University of Wollongong Australia
徐州幼兒師範高等專科學校	Xuzhou Kindergarten Teachers College

Experiential Learning

體驗式學習



Pamela Peck Discovery Space (PPDS) is a specialist play space on campus, designed for children and families from birth to eight, aiming to actively promote innovative best practices in ECE.

Apart from providing experiential learning opportunities for local families and ECE professionals, PPDS serves as a 'experiential living lab' in supporting teaching and learning. All BEdECE students are required to complete enrichment activities with 12 hours per year, as a form of community and professional learning. These activities deepen students' understanding of the importance of free-play, how play and learning are connected, and have a first-hand experience of what quality parent-teacher-child interactions are.

PPDS also functions a research lab for the faculty. Through the PPDS activities, our teaching staff can also gather pertinent data for teaching and research purposes.

耀學園專為初生至8歲的嬰幼兒及其家長而設，希望透過邀請社區參與，宣揚耀中多年來秉持的幼教理念。

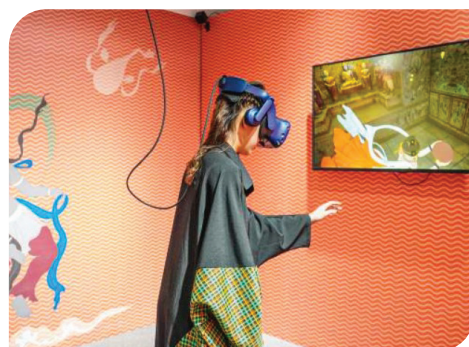
除了為家庭和幼教從業員提供體驗式學習機會外，耀學園還充當支持教學和學習的「生活實驗室」。所有就讀學士課程的學生都必須完成每年12小時的訓練，作為認識社區和專業學習的一環。這些活動加深了學生對「遊戲中學習」自由玩耍的重要性、玩耍和學習如何聯繫的理解。

Mengxue and ECE

蒙學與幼教

Mengxue, or Chinese formative education, has been a source of enlightenment for millennia. Thanks to the flourishing literary culture of the time, the abundance and substance of the Mengxue classics from the Song to the Ming dynasties are particularly remarkable. The texts not only emphasise ethics and reasoning, but also embody the Chinese people's pursuit and imagination of a fulfilling life, an ideal society and a universal world. If the essence thereof can be extracted, it will broaden the horizons of the present-day kindergarten, primary and secondary school students; at the same time, it will facilitate the connection and interaction between teachers and students, as well as parents, making it a very effective supplement and extension to the existing basic education in the broad sense.

蒙學，即千百年來中國人啟蒙之學；由於其時文風鼎盛，從宋代到明代留下的蒙學經典，數量尤其多、內容尤其豐富。蒙學典籍不只重人倫、明事理；同時，也沈澱了中國人對於美好人生、理想社會、大同世界的追求與想像。如能萃取其菁華，便能拓寬現時幼、小、中學生之視野；同時，亦能促進師生、家長之間的聯繫與互動；成為眼前廣義基礎教育，非常有效的補充與擴展。



As early as 2019, the internal deliberations and discussions on the revival of “Mengxue” began within the Yew Chung Yew Wah Education Foundation. Subsequently, following a year-long preparation, the Yew Chung College of Early Childhood Education (YCCECE)—Mengxue Institute was officially established on the 90th anniversary of Yew Chung Yew Wah (October 14, 2022).

早於2019年，耀中耀華教育機構內部便已開展復興「中華蒙學」的思考與討論。及後，經過近一年籌備——耀中幼教學院·中華蒙學苑，於「創校九十周年紀念日」（2022年10月14日）正式宣告成立。

The Classic Chinese Theatre performance

More than ten mentors guided and supported us, and more than 20 primary and lower secondary students from Yew Chung Hong Kong joined the cast. Since the end of last year, we had intensive preparations and rehearsals for more than four months. The creative team consisted of playwrights and directors; Jingju and Kunqu actors; child psychologists; and calligraphers. Most of these participants have PhDs or master's degrees. The theatre training and the contents of the cultural education were presented in a variety of forms, covering a wide range of categories, including Beijing Opera, calligraphy, Chinese martial arts, dance, history, literature, geography, and even the necessities of the ancients. As such, the audience was able to experience a new approach to ancient Chinese culture.

“中華經典劇場”

在“中華經典劇場”，《三國演義·火燒赤壁》被搬上舞台；在十多位導師指導、支援之下，由香港耀中二十多名高小、初中生出演。創作團隊由話劇編導、京崑演員、兒童心理學家、書法等組成（大多具有博士、碩士學歷）。上述戲劇培訓與文化教育內容，涵蓋京劇、書法、武術、舞蹈、歷史、文學、地理，甚至古人衣食住行等廣闊範疇，並以多媒體形式呈現。



Tongmeng Cultural Ambassadors

Conducted guided tours of the Palace Museum for kindergarten and primary school children.

童蒙文化大使

為幼兒園及初小學生講解故宮文化。



Field Experience & Overseas Exposure

幼教體驗及海外學習機會

Exchange Tour to University of Wollongong
澳洲伍倫貢大學交流團



Participation in Pacific Early Childhood Education Research Association (PECERA) Annual Conference
參與太平洋區幼兒教育研究學會年度會議



Participation in International Conference on Early Childhood Education and Mengxue
參與幼教與中華蒙學國際研討會



Participation in the "Conversation with Professor Kishore Mahbubani"
參加「馬凱碩教授與香港青年學生對話」

Practicum 實習安排



BEdECE students are offered 8-week Practicum and 8-week Advanced Practicum opportunities. It allows students to polish observation and hands-on skills in different Early Childhood Education Settings.

Students will have their Practicum in international preschools, local kindergartens and in special education settings.

What's more unique is the practicum arrangement in Yew Chung International School which is exclusively offered to YCCECE students taking the ECE programmes.

幼兒教育榮譽學士課程設8星期基本實習及8星期高階實習，學生將會獲安排到不同幼稚園及幼教機構進行實習，從而培養他們的觀察能力及豐富他們的實戰經驗。學生將先後到國際幼稚園、本地幼稚園及特殊教育機構進行實習，更可享受有耀中國際學校獨家的實習機會。

INTERNATIONAL KINDERGARTENS	國際幼稚園
Aristle International Kindergarten	雅士圖國際幼稚園
Box Hill (HK) International Kindergarten - Fo Tan	博士山(香港)國際幼稚園—火炭
Box Hill (HK) International Kindergarten - Ma On Shan	博士山(香港)國際幼稚園—馬鞍山
Box Hill (HK) International Kindergarten - Tseung Kwan O	博士山(香港)國際幼稚園—將軍澳
City Kids Preschool	幼童樂園協會幼兒園
ESF International Kindergarten (Hillside)	英基國際幼稚園(曉新)
ESF International Kindergarten (Tung Chung)	英基國際幼稚園(東涌)
Fairchild Nursery & Kindergarten	楓齋幼兒園暨幼稚園
Galilee International School	伽利利國際幼稚園
Jing Jing International Kindergarten & Nursery	晶晶國際幼稚園暨幼兒園
Kendall International Preschool (Island East)	漢迪國際幼稚園(港島東)
Kendall International Preschool (West Kowloon)	漢迪國際幼稚園(西九龍)
Lou Pichoun French Kindergarten	樂必津法國幼稚園
MAGART International Kindergarten (Fanling Campus)	瑪歌瑞特國際幼稚園(粉嶺)
MAGART International Kindergarten (Kornhill Campus)	瑪歌瑞特國際幼稚園(康山)
MAGART International Kindergarten (Whampoa Campus)	瑪歌瑞特國際幼稚園(黃埔)
Malvern College Pre-School Hong Kong (Island West)	香港墨爾文國際幼稚園(港島西)
Malvern College Pre-school Hong Kong (Coronation Circle)	香港墨爾文國際幼稚園
Maple Bear Canadian International Kindergarten Hong Kong	楓葉小熊加拿大國際幼稚園香港分校
Mighty Oaks International Nursery and Kindergarten	奧恩國際幼兒園暨幼稚園
Mills International Preschool	苗士國際幼稚園
Mulberry House International Kindergarten	懋柏禮國際幼稚園
Parkview International Preschool	栢基國際幼稚園
Parkview International Preschool (Kowloon)	栢基國際幼稚園(九龍)
Small World Christian Kindergarten	Small World 基督教幼稚園
Topkids International Kindergarten (Yuen Long)	德怡國際幼稚園(元朗)
Yew Chung International School (Kindergarten)	香港耀中國際學校(幼稚園)
YMCA of Hong Kong Christian International Kindergarten	港青基信國際幼稚園

LOCAL KINDERGARTENS / NURSERIES	本地幼稚園 / 幼兒園
Aberdeen Baptist Church Pak Kwong Kindergarten	香港仔浸信會白光幼稚園
Agnes English Kindergarten	雅麗斯英文幼稚園
Baptist Pui Li School	浸信會培理學校
Creative Kindergarten (Kowloon Tong Main Campus)	啟思幼稚園幼兒園(九龍塘正校)
Creative Kindergarten (Sham Wan Tower Campus)	啟思幼稚園幼兒園(深灣軒)
CUHK FAA Shun Lung Yan Chak Kindergarten	香港中文大學校友會聯會順龍仁澤幼稚園
CUHK FAA Thomas Cheung Kindergarten	香港中文大學校友會聯會張煊昌幼稚園
Gigamind Kindergarten	激活幼稚園
HKCS Kwun Tong Nursery School	香港基督教服務處觀塘幼兒學校
HKCS Times Nursery School	香港基督教服務處時代幼兒學校
HKSKH St Nicholas' Nursery School	香港聖公會聖尼哥拉幼兒學校
Homantin Yang Memorial Methodist Pre-School	何文田循道衛理楊震幼兒學校
Hong Kong Man Sang Kindergarten (North Point)	香港民生幼稚園(北角)
Hong Kong Man Sang Kindergarten (Western District)	香港民生幼稚園(西區)
Jing Jing Kindergarten (Shun Lee Branch)	晶晶幼稚園(順利分校)
Lick Hang Kindergarten	力行幼稚園
Little Buds Kindergarten	小萌幼稚園
Lung Kong World Federation School Limited Chu Sui Lan Anglo-Chinese Kindergarten	世界龍岡學校朱瑞蘭(中英文)幼稚園
Mink Anglo-Chinese Kindergarten	明雅中英文幼稚園
NTW & JWA Cheung Fat Estate Nursery School	新界婦孺福利會長發幼兒學校
NTW & JWA Limited Pok Hong Estate Nursery School	新界婦孺福利會博康邨幼兒學校
NTW & JWA Limited Sheung Shui Nursery School	新界婦孺福利會上水幼兒學校
NTW & JWA Limited Yuen Long Nursery School	新界婦孺福利會元朗幼兒學校
Rosaryhill Kindergarten	玫瑰崗幼稚園
S.K.H Holy Trinity Church Tsang Shiu Tim Kindergarten	聖公會聖三一堂曾肇添幼稚園
S.K.H. Kindly Light Church Holy Carpenter Kindergarten	聖公會慈光堂聖匠幼稚園
S.K.H Kindly Light Church Or Pui Cheung Kindergarten Nursery	聖公會慈光堂柯佩璋幼稚園
S.K.H St Peter's Church Shan King Estate Kindergarten	聖公會青山聖彼得得堂山景邨幼稚園
Sacred Heart Canossian Kindergarten	嘉諾撒聖心幼稚園
Shun Tak Fraternal Association Leung Kit Wah Kindergarten	順德聯誼總會梁潔華幼稚園
St Clare's Primary - Kindergarten Session	聖嘉勒小學 - 幼稚園部
St Mark's Church Bradbury Kindergarten	聖馬可堂白普理幼稚園
St Peter's Catholic Kindergarten	天主教聖伯多祿幼稚園
Sun Island Kindergarten (Tung Chung Branch)	太陽島幼稚園(東涌分校)
Talent Kindergarten & Nursery	天樂幼稚園暨幼兒園
TWTA Yau Kin Fung Kindergarten	荃灣商會邱健峰幼稚園
Western Pacific Kindergarten	西太平洋幼稚園
Yiu Tung Baptist Kindergarten	耀東浸信會幼稚園

SEN SETTINGS	特殊教育機構
Bridge Academy	貝智教育中心
Evangelize China Fellowship Holy Word School	基督教中國佈道會聖道學校
Hong Chi Morninghill School, Tsui Lam	匡智翠林晨崗學校
Hong Kong Christian Service Cheung Wah Child Care Centre	香港基督教服務處祥華幼兒中心
Jockey Club Sarah Roe School	賽馬會善樂學校
SAHK Apleichau Pre-school Centre	香港耀能協會鴨洲幼兒中心

CRÈCHE CENTRE	嬰兒園
Fairchild Junior Academy	Fairchild Junior Academy
HKSPC Air Cargo Community Day Crèche	香港保護兒童會香港空運業界嬰兒園
HKSPC Jessie Tam Day Crèche	香港保護兒童會譚杜佩珍日托嬰兒園
HKSPC SIA Shaukiwan Day Creche	香港保護兒童會新航筲箕灣日托嬰兒園

Yew Chung Yew Wah Teachers of Tomorrow Scheme 耀中耀華明師計畫



Under our unique Yew Chung Yew Wah Teachers of Tomorrow Scheme (TOT), BEdECE and HDECE graduates can enjoy an exclusive employment opportunity at Yew Chung International Schools in Hong Kong or Mainland China. Students who have excelled academically can apply, and the employment duration is typically one-year, giving them the best start to their careers.

耀中教育機構特意設立「耀中耀華明師計畫」，讓幼兒教育榮譽學士及高級文憑畢業生提供獨一無二的機會開創事業先機，讓這些表現優秀且成功通過甄選的畢業生於香港或內地耀中、耀華幼稚園工作至少一年。



“ Working at YCIS Lingang Campus, a new school, has been both challenging and thrilling. From the very outset, my co-teacher and I have established a strong bond of trust. Together, we set up the classroom and explored various methods of recording children’s behavior to identify the most effective approach. These experiences have been truly unforgettable and will undoubtedly contribute to my personal and professional growth. I highly recommend this programme to other YCCECE students, as it provides a unique opportunity to work in YCIS SH. Not only does it offer valuable work experience, but also allows for an immersive life experience in the vibrant city of Shanghai. I believe this year will be one of the most remarkable chapters in my life, filled with shining moments and significant personal development.

在上海臨港耀中校舍工作是一個非常具有挑戰性和令人興奮的經歷。從一開始，我的聯席教師和我建立了互信的關係。我們一起設置教室，並尋求不同的方法記錄孩子的行為，以找到最好的方式。我認為所有這些經歷都是難以忘懷的，並且將對我未來的發展有所幫助。我會向其他耀中幼教學院的學生推薦這個計畫，因為這是一個非常獨特的機會。不僅可以獲得寶貴的工作經驗，還可以體驗上海的生活。我認為這一年將成為我生命中最璀璨的時刻之一。

Emmie Chan, 陳芍堯
2022 BEdECE Graduate
2022 幼兒教育榮譽學士畢業生



“ I have thoroughly enjoyed my TOT experience thus far, and it has been filled with countless memorable moments. As a first-time full-time teacher, I had the privilege of witnessing the rich diversity within the classroom. The guidance and support from teachers at TOT have been invaluable, as they have consistently provided me with opportunities to express myself and offered assistance every step of the way.

到目前為止，我非常享受我在「耀中耀華明師計劃」的全職教師實習體驗，並在那裡經歷了許多美好時刻。由於這是我第一次擔任全職教師，我有很多機會觀察到課堂上的不同。那裡的老師們都一直非常支持我，並給予我很多表達自己的機會，他們對我的提攜對我來說是無價寶。”

Kay Sze, 施嘉麗

2022 BEdECE Graduate

2022 幼兒教育榮譽學士畢業生

“ Emmie's performance during her training here at YCIS Lingang campus was exceptional. What stood out the most was her remarkable personality when interacting with students, staff, and parents. She fully embraced and implemented Value 1 of the 12 values (Yew Chung Approach to Early Childhood Education) by consistently treating all students with respect. Additionally, her strong rapport with the staff exemplified Value 3, as she made a dedicated effort to collaborate with all members of the team on an equal basis.

Emmie在培訓期間表現出色。最令人印象深刻的是她面對學生、員工和家長的態度。她充分表現並應用了（耀中幼教教學法的）12個價值中的第一個價值，積極地尊重對待所有學生。此外，她與員工的關係也反映了第三個價值，她努力與所有員工平等合作。”

Thomas Powell, Cathy Yang
Co-heads of YCIS Lingang Campus
上海臨港耀中聯席主管

“ Emmie's active involvement and outstanding performance demonstrate her unwavering dedication to delivering top-notch care and education to young children. Through her efforts in keeping parents well-informed and engaged, as well as meticulously documenting the progress of each child, she plays a vital role in establishing a supportive and nurturing learning environment that fosters the growth

Emmie的參與和表現展示了她對於為幼兒提供高品質照顧和教育的承諾。透過及時通知和讓家長參與其中，並記錄每個孩子的發展進度，她創造了一個富支持性和培育的學習環境，促進所有孩子的成長和發展。這正是我們耀中所追求的。”

Debby Kennett

ECE coordinator and appraiser in YCIS Lingang Campus
上海臨港耀中幼兒教育統籌及評估員

Research and Community Support

研究項目及社區支援

YCCECE is making an impact on the most fast-moving and challenging early childhood education trend in Hong Kong. Actively interact with professional parties, the Research Office is thrived to closely collaborate and have exchange connection with the government and industry leaders to facilitate in-depth research that contribute to ECE in Hong Kong.

The College utilizes both public and private-sector fundings appropriately for every type of project. As a pioneer and the very first and only specialist higher education institution in Asia, it shares the latest research findings and provide support for the operation of lectures and conferences for the general public.

耀中幼教學院一直致力以研究成果與獨特的灼見激發教育之旅或為社會帶來貢獻。學院的在校研究項目得到非政府機構的支持與資助，由學院的世界知名幼教專家領導，融匯堅實的專業知識與豐富的經驗，受到廣泛認同的研究往往為幼兒教育提供切實可行的改進方案。



Jockey Club 'CoolPlay' Project

The three-year Jockey Club 'CoolPlay' Project, funded by the Hong Kong Jockey Club Charities Trust and co-organised by Yew Chung College of Early Childhood Education (YCCECE) and the Vocational Training Council (VTC), has offered child-centric teaching resource kits, training and support to local early childhood educators and parents.

Since its launch in 2020, Jockey Club 'CoolPlay' Project has received positive feedback from schools and parents. The three-year project has benefited 20 schools, 132 practising teachers, 509 student teachers, and more than 2,300 children and families. Three notable achievements have been attained, namely, developing Hong Kong's first three-in-one exploration kit JumpStarter (bilingual story books, a teachers' guide and a parents' guide), training the first batch of Exploratory Learning seed teachers, nurturing parents with exploration mindset through the popular Discovery Space visits, and establishing Hong Kong's first Home-School-Community network setting the benchmark for Exploratory Learning.

Jockey Club 'Bright Start' Project

The Bright Start project is a three-year pilot project organised by the Hong Kong Christian Services (HKCS) and driven by Yew Chung College of Early Childhood Education (YCCECE). Supported by The Hong Kong Jockey Club Charities Trust, the project aims to develop a high-quality Educare model for child-care centres by providing holistic support to both child care workers and parents. We work with six other partnering organisations with various expertise who share the same vision as us.

Other featured research projects of the College

- ◆ HKJC Inclusive Quality (IQ) Preschool Project
- ◆ Research on the effectiveness of a newly developed Quality Service Model for Early Years (CRH)
- ◆ CLP Education Fund
- ◆ From Assignment to Published Work: Documenting the Process of Story-Making
- ◆ Kindergarten English Enhancement (KEEP) Programme
- ◆ Exploring Innovative Pedagogical Practices in Early Childhood Education Teacher Education
- ◆ Academic Consultation Service for Hong Chi Association Occupational Therapy Unit (Adult Services)

賽馬會「智·幼·趣」計劃

由香港賽馬會慈善信託基金捐助，耀中幼教學院聯同職業訓練局 (VTC) 共同主辦為期三年的幼兒教育項目—賽馬會「智·幼·趣」計劃第一階段於2020年起開展，一直為本地教育者及家長提供適合幼兒的教學資源、培訓及支援，並建構穩健的「家校社網絡」，讓他們能夠充分掌握相關知識和教學技巧，引導幼兒從校內以及日常生活中進行各種「探索式學習」。

賽馬會「智·幼·趣」計劃第一階段自2020年推出以來，一直深得學校與家長支持與認同，三年內惠及20所學校、132名在職教師、509名準教師、超過2,300名幼兒及其家庭，結果令人鼓舞。透過各種針對不同對象的培訓或活動，賽馬會「智·幼·趣」計劃第一階段成功創造出三大成果，分別開發全港首套三合一「探索式學習」教學資源—JumpStarter (雙語兒童故事書、教師指南及家長指南)、訓練全港首批「探索式學習」的種子老師、以及打造廣受家長歡迎的〈耀學園親子之旅〉，「家·社·校」攜手推動本地幼兒教育發展。



賽馬會幼兒「喜步」計劃

賽馬會幼兒「喜步」計劃是一個為期三年的試點項目，由香港基督教服務處 (HKCS) 組織，並由耀中幼教學院 (YCCECE) 推動。項目由香港賽馬會慈善信託基金支持，旨在為幼兒工作者和家長提供全面支持，並為幼兒中心開發高質量的教育模式。耀中幼教學院與其他六個具有不同專業知識的合作組織合作，這些組織均與學院抱著相同的願景。

學院其他特色研究項目

- ◆ 賽馬會幼兒融合教育研究計劃
- ◆ 開發的早期教育優質服務模型的有效性研究
- ◆ 中電教育基金
- ◆ 從作業到發表作品：記錄故事製作過程
- ◆ 幼稚園教語教與學提昇專業發展計劃
- ◆ 探索幼兒教育教師教育的創新教學實踐
- ◆ 匡智會職業治療組學術諮詢服務 (成人服務)



Student Support Services

學生支援服務



CHINESE AND ENGLISH LANGUAGE LEARNING 中英語言學習

- ◆ Intensive preparation courses 語言強化課程
- ◆ English / Chinese language support 英文／中文語言學習
- ◆ One-on-one coaching 一對一輔導
- ◆ Online learning resources 網上學習資源



COMMUNITY SERVICES 社區服務

- ◆ Personal development programmes 個人發展計劃



ACADEMIC ENRICHMENT 學業支援

- ◆ Academic workshops 學習工作坊
- ◆ One-on-one personal tutor 一對一私人導師
- ◆ Online learning resources 網上學習資源



FAITH 信仰

- ◆ On-campus prayers' room 祈禱室
- ◆ Cultural support services 文化支持服務



FINANCIAL WELLBEING 財務支援

- ◆ Extensive scholarship schemes 廣泛的獎學金計劃
- ◆ Bursaries for students in need 為有需要的學生提供助學金
- ◆ Overseas exchange grants 海外交流資助



STUDENT ASSOCIATION AND STUDENT CLUBS

學生會和學生興趣小組

- ◆ Leadership skills development 領導技能發展
- ◆ Peer mentoring 友伴指導計劃



CAREER 就業

- ◆ Career advice and development 職業輔導和發展
- ◆ Employability skill workshops 就業技能研討會



MENTAL HEALTH 精神健康

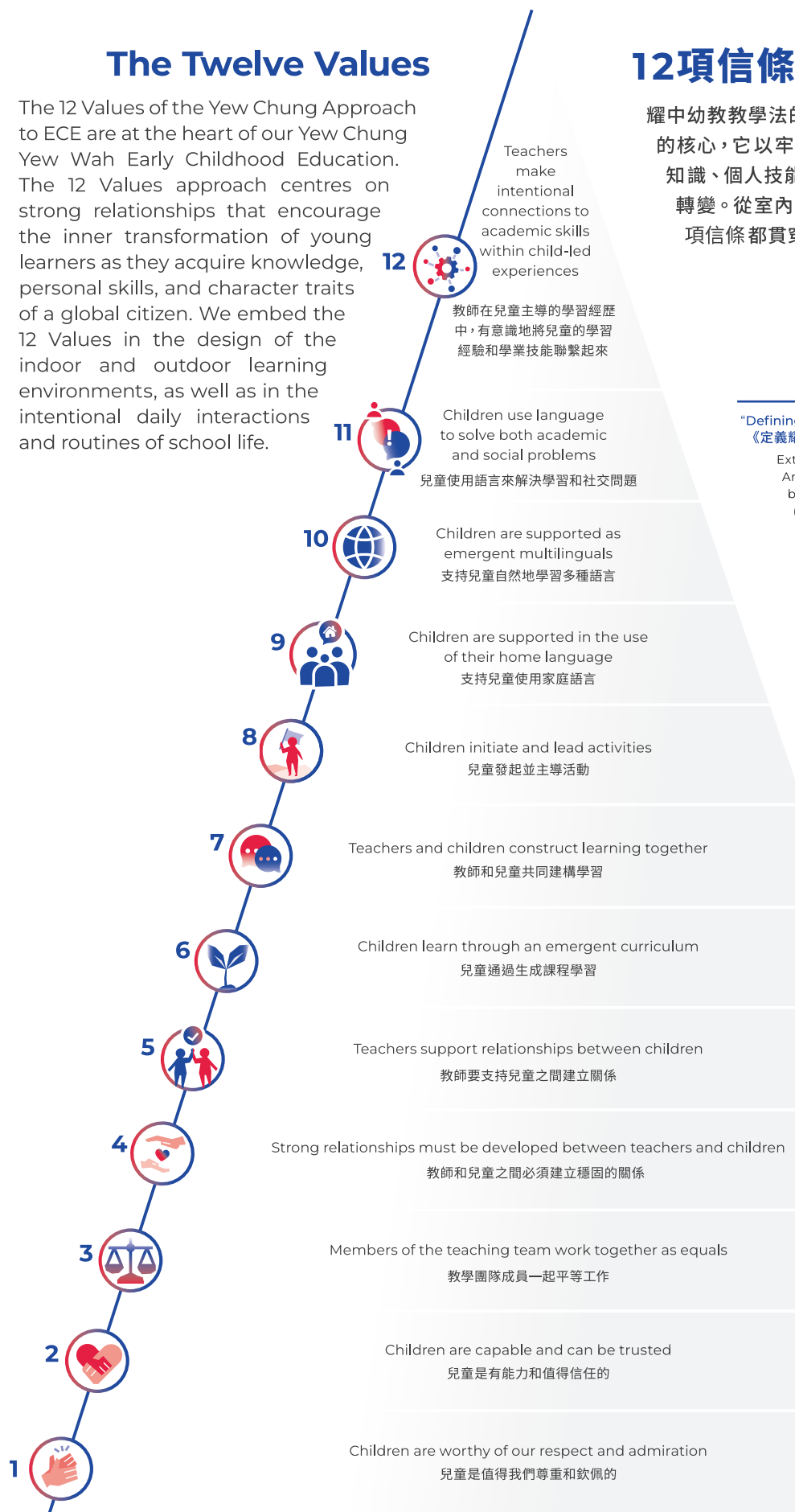
- ◆ Mental health support courses 精神健康課程
- ◆ Workshops for success 正向研討會

Yew Chung Approach to Early Childhood Education

耀中幼教教學法

The Twelve Values

The 12 Values of the Yew Chung Approach to ECE are at the heart of our Yew Chung Yew Wah Early Childhood Education. The 12 Values approach centres on strong relationships that encourage the inner transformation of young learners as they acquire knowledge, personal skills, and character traits of a global citizen. We embed the 12 Values in the design of the indoor and outdoor learning environments, as well as in the intentional daily interactions and routines of school life.



12項信條

耀中幼教教學法的12項信條乃我們幼兒教育模式的核心，它以牢固的關係為中心，鼓勵學生掌握知識、個人技能和全球公民應有的品格，作出內在轉變。從室內外學習環境的設計至校園生活，12項信條都貫穿於耀中耀華的教育之中。

“Defining A Yew Chung Approach: An Ongoing Project”
《定義耀中幼兒教育法：一個正在進行的項目》

Extracted from keynote address to the Yew Chung 85th Anniversary Conference
by Dr Stephanie Sanders-Smith, S.C.
(2018, March 16-17)
摘自：Stephanie Sanders-Smith博士, S.C.
香港耀中85週年會議主題演講
2018年3月16-17日

Scholarships and Awards for Admissions

入學獎學金及獎項

2023 / 24 Academic Year 學年

\$35,924

average scholarship / award amount for each new student
每名新生的平均入學獎學金 / 獎項金額為\$35,924

\$34,390

2024/25 Academic Year NMTSS from
Hong Kong Government for BEdECE programme
2024/25 學年香港政府為學士課程提供的
最高免入息審查資助

10+

Scholarships and award
schemes for admissions
超過10個入學獎學金及獎項計劃

90%

students awarded with scholarships /
awards for admissions
90%學生獲得獎學金 / 獎項

Tuition Fee

學費

BEdECE 幼兒教育榮譽學士

Year 1 Entry · 4-Year Full-Time 一年級入學 · 四年全日制

	Tuition fee 學費	After deducting NMTSS* 扣除NMTSS後學費*
Year 1 一年級	\$93,460	\$59,070
Year 2 二年級	\$93,460	\$59,070
Year 3 三年級	\$105,140	\$70,750
Year 4 四年級	\$105,140	\$70,750

Year 3 Entry · 2-Year Full-Time 三年級入學 · 兩年全日制

	Tuition fee 學費	After deducting NMTSS* 扣除NMTSS後學費*
Year 3 三年級	\$99,300	\$64,910
Year 4 四年級	\$99,300	\$64,910

Year 3 Entry · 4-Year Part-Time 三年級入學 · 四年兼讀制

	Tuition fee 學費
Year 3 (First year) 三年級(第一年)	\$49,650
Year 3 (Second year) 三年級(第二年)	\$49,650
Year 4 (First year) 四年級(第一年)	\$49,650
Year 4 (Second year) 四年級(第二年)	\$49,650

HDECE 幼兒教育高級文憑

	Tuition fee 學費
Year 1 一年級	\$85,500
Year 2 二年級	\$88,100

DECEC 幼兒教育與照顧文憑

	Tuition fee 學費
Year 1 一年級	\$66,000

*Eligible students will receive subsidy amount of
\$34,390 per year (2024/2025)
合資格學生每年可獲 \$34,390 學費資助 (2024/2025)

How to Apply 入學申請程序



Scan & apply now
立即掃碼申請

1

Complete Application

遞交申請

- ◆ Apply via <https://apply.yccece.edu.hk/>
- ◆ Create a new account for submitting application.
- ◆ Applicants are required to settle the nonfundable application fee.

- ◆ 瀏覽 <https://apply.yccece.edu.hk/>
- ◆ 建立新帳戶以遞交申請。
- ◆ 申請人須繳交報名費，取錄與否概不退還。

2

Interview Arrangements

面試安排

- ◆ Applicants will be invited to attend an admission interview.
- ◆ Upon passing the admission interview, applicants will receive a conditional or confirmed offer.

- ◆ 學院將聯絡申請人安排入學面試。
- ◆ 如申請人通過面試，將收到有條件/確認取錄。

3

Offer Acceptance

確認學位

Applicants are required to -

- ◆ Submit supporting documents (if any)
- ◆ Complete the registration procedures
- ◆ Settle the registration fee

申請人必須 -

- ◆ 遞交證明文件 (如有)
- ◆ 完成註冊程序
- ◆ 支付註冊費

Tuition fee 學費



English



中文

Scan QR code for more details

掃描二維碼了解更多

For admissions enquiry, please contact YCCECE Admissions Office
如有任何查詢，請聯絡學院招生部



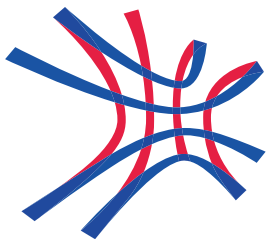
(852) 3977 9877



admissions@yccece.edu.hk



(852) 9312 0733



**YEW CHUNG COLLEGE
OF EARLY CHILDHOOD
EDUCATION**

耀中幼教學院

2 Tin Wan Hill Road, Tin Wan, Aberdeen, Hong Kong
香港香港仔田灣田灣山道二號

-  (852) 3977 9877
-  (852) 9312 0733
-  (852) 2338 4320
-  admissions@yccce.edu.hk

www.yccce.edu.hk



Official Website
官方網站

YCCECE is a member of the Yew Chung Education Foundation (YCEF), both are registered non-profit organisations in Hong Kong

耀中幼教學院為耀中教育機構成員，兩者均為香港註冊非牟利團體