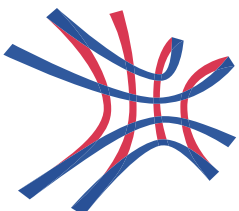




# 2021-22 Annual Report 年度報告



YEW CHUNG COLLEGE  
OF EARLY CHILDHOOD  
EDUCATION

耀中幼教學院

# Content 目錄

**03**

About YCCECE

**06**

Governance

**09**

Foreword

**10**

Student  
Demographics

**12**

College  
Development

**13**

Congregation

**15**

Research  
Capabilities

**21**

Community  
Outreach

**24**

Giving to  
College

**31**

Financial  
Information



# Yew Chung College of Early Childhood Education 耀中幼教學院

The Yew Chung College of Early Childhood Education (YCCECE) is an accredited, non-profit degree-awarding institution registered in Hong Kong under the Post-Secondary Colleges Ordinance (Cap. 320), with charitable status under Section 88 of the Inland Revenue Ordinance. It is the first and only higher education institution in Asia specialising and invested wholly in the exciting foundational field of early childhood education (ECE).

The YCCECE's predecessor, the Yew Chung Community College (YCCC), made history in 2014, as the first private higher education institution to provide formal teacher training in Hong Kong with the launch of its Higher Diploma in ECE (HDECE) programme. In 2018, YCCC was transformed into the YCCECE with its flagship Bachelor of Education (Honours) in ECE (BEdeCE) degree programme. This milestone came full-circle in Yew Chung's near 90-year history, with the completion of a novel 'B to B' (Baby to Bachelor) education spectrum.

We are deeply committed to nurturing new generations of passionate and inspired ECE professionals, who will have an enduring impact on the lives of numerous young children and their families, allowing us all to create a better future together.

耀中幼教學院是根據《專上學院條例》(第320章)在香港註冊的認可非牟利學位頒授機構，並屬《稅務條例》第88條獲豁免繳稅的公共性質慈善機構及慈善信託。學院是亞洲首間及區內唯一專注於幼兒教育的高等教育學府。

學院前身為耀中社區書院，並於2014年成為香港首間提供正規學前教師培訓的自資高等教育院校，推出幼兒教育高級文憑課程。在2018年，耀中社區書院升格為耀中幼教學院，推出幼兒教育榮譽學士學位課程，成就了耀中教育機構「由嬰兒到學士」教育的系譜，亦彰顯了耀中近90年在教育界發展的里程碑。

學院矢志培育更多富熱誠、優秀的幼教工作者，為更多孩子及家庭帶來積極深遠的影響，一同成就更美好的將來。



## Our Vision 願景

A better world achieved through developing individual human potential, knowledge of the world, global competence and ethical values to the fullest.

透過培育個人潛能、知識學問、國際視野和道德價值，建立一個更美好的世界。

## Our Mission 使命

The College strives to become a preferred degree-awarding institution in Hong Kong, recognised for high quality programmes and learning experiences that will enable students to achieve their life goals and to support the sustainable and strategic development of Hong Kong. The College seeks to be recognised in Hong Kong and in the Asia-Pacific region for its excellence in nurturing passionate and innovative early childhood education professionals who can advocate and bring about improvement in the field.

學院矢志成為香港升學的首選高等教育院校，為學生提供優質的教育和學習體驗，裝備學生實踐理想，支持香港可持續策略發展。同時為香港以至亞太區培養更多富熱誠、敢創新的幼教專業人才，並推動業界的發展。



# College Fast Facts

## 學院簡說

### 1st

degree-awarding ECE  
institution in Asia  
亞洲首間幼兒教育  
學位頒授機構

### 1st

self-funded tertiary  
institution to offer teacher  
training programmes  
首間提供教師培訓課程的  
自資大專院校

### 50+

kindergarten  
practicum partners  
超過50間幼稚園實習夥伴

### 4

ECE specialised  
concentrations  
4個幼教專修範疇

### 4

programmes that allows  
graduates to obtain all four  
professional qualifications  
required to become an  
ECE educator in Hong Kong  
課程授予畢業生四個  
幼教工作相關專業資格

### 80%+

students awarded with  
scholarships or bursaries  
超過80%學生獲得獎學金  
或助學金

### 40,000+

children visitors annually to  
the Pamela Peck Discovery  
Space (PPDS) learning  
laboratory.

每年超過40,000名孩子體驗  
「耀學園」學習實驗室

### 100%

English language teaching  
and learning environment  
100%英語教學環境

### 90%

HDECE graduates  
further their studies or  
find employment  
90%幼兒教育高級文憑畢業生  
繼續深造或找到工作





# Governance 學院管治

We are proud of our strong commitment to maintaining the highest standards of corporate governance with international and local education experts as well as professionals from the social welfare and commercial sectors that support us on all levels. They provide us with advice to grow the College, enabling the YCCECE to remain an exemplary institution in our field.

我們致力堅守最高標準的學院管治。來自世界各地及本地教育界、社福界和商界人士組成的專業管理團隊，為學院提供全方位支援及專業意見，助學院不斷成長，成為領導業界的典範。

# Board of Governors 校董會

Chairperson 主席	
Dr. Betty Chan 陳保琼博士	Chairperson, Yew Chung Education Foundation 耀中教育機構主席
Vice-Chairperson 副主席	
Professor Patrick Chau 周蔭強教授	Vice Provost for Research and Knowledge Exchange, Li Dak Sum Chair Professor in Information Systems and Operations Management, University of Nottingham Ningbo China 寧波諾丁漢大學副校長(科研及知識交流)兼李達三信息系統及運營管理首席教授
Members 成員	
Dr. Lydia Chan 陳麗生博士	Deputy CEO, Yew Chung Education Foundation 耀中教育機構副行政總裁
Mr. Felix Hsu 徐蔚立先生	Deputy Chief Executive Officer, China Education Development (Investment & Management) Co. Ltd. 中國教育發展投資管理有限公司副行政總裁
Professor Paul Yip 葉允鴻教授	Member, Board of Directors, Yew Chung Education Foundation 耀中教育機構董事會成員
Dr. XU Xuejun 許學軍博士	Director and Deputy CEO, Yew Wah Education Management Co. Ltd. 耀華教育管理有限公司總監兼副行政總裁
Professor Fanny Cheung, SBS, OBE, JP 張妙清教授, 銀紫荊星章, OBE, 太平紳士	Emeritus Professor of Psychology, Senior Advisor, Faculty of Social Science, Hong Kong Institute of Asia-Pacific Studies, The Chinese University of Hong Kong 香港中文大學心理學系榮休講座教授及社會科學院研究教授
Professor Lam Chi Chung 林智中教授	Adjunct Professor, Department of Curriculum and Instruction, The Chinese University of Hong Kong 香港中文大學課程與教學學系客座教授
Professor Rhee Won Young 李元寧教授	Professor Emeritus, Chung-Ang University, Seoul, South Korea 首爾中央大學幼兒教育系榮休教授
Professor Kathy Sylva, OBE Kathy Sylva教授, OBE	Honorary Research Fellow and Professor of Educational Psychology, Department of Education, University of Oxford, U.K. 英國牛津大學教育系榮譽研究院士及教育心理教授
Dr. Jane Lee, JP 李正儀博士, 太平紳士	Former Director of the Hong Kong Sheng Kung Hui (Anglican) Welfare Council 香港聖公會福利協會前總幹事
Dr. Simon LEE, MH, JP 李浩然博士, 榮譽勳章, 太平紳士	Chief Strategy Officer (Greater Bay Area), China Resources Group 華潤(集團)有限公司粵港澳大灣區首席戰略官
Dr. Elsie Leung, GBM, JP 梁愛詩博士, 大紫荊勳章, 太平紳士	Solicitor (Consultant), Lu, Lai & Li Solicitors & Notaries, Notary Public, China-appointed Attesting Officer 姚黎李律師行(顧問), 香港國際公證人, 中國委託公證人
Mr. Li Nai Yiu 李乃堯先生	Former President, Beijing-Hong Kong Academic Exchange Centre 京港學術交流中心前總裁
Mr. Joseph Lo 勞建青先生	Former Chairman, Deloitte China 德勤中國前主席
Professor Allan Yuen 袁海球教授	President, YCCECE 耀中幼教學院校長

Chairperson 主席	
Dr. Lydia Chan 陳麗生博士	Deputy CEO, Yew Chung Education Foundation 耀中教育機構副行政總裁
Vice-Chairperson 副主席	
Dr. Chan Fun Ting 陳訓廷博士	Former Vice-Principal (Academic Affairs), HKU SPACE Community College 香港大學附屬學院前副校長(學術事務)
Members 委員	
Dr. Betty Chan 陳保琮博士	Chairperson, Yew Chung Education Foundation 耀中教育機構主席
Mr. Felix Hsu 徐蔚立先生	Deputy Chief Executive Officer, China Education Development (Investment & Management) Co. Ltd. 中國教育發展投資管理有限公司副行政總裁
Professor Lam Chi Chung 林智中教授	Adjunct Professor, Department of Curriculum and Instruction, The Chinese University of Hong Kong 香港中文大學課程與教學學系客座教授
Mrs. Priscilla Lui, B.B.S 雷張慎佳女士，銅紫荊星章	Member, Commission on Children, HKSAR; Former Chair, Hong Kong Committee of Children's Rights; Former Director, Against Child Abuse; and Chair, Sheng Kung Hui Safeguarding Policy Committee 兒童事務委員會成員；香港兒童權利委員會前主席；防止虐待兒童會前總幹事；及香港聖公會防護政策委員會主席
Mr. Moses Yeung 楊偉強先生	Partner, IAM Legacy Limited (Family Office) 星安傳承有限公司(家族辦公室)合夥人
Professor Allan Yuen 袁海球教授	President, YCCECE 耀中幼教學院校長
Dr. Frank Lam 林文全博士	Vice-President, YCCECE 耀中幼教學院副校長
Dr. Crystal Zheng 鄭婉薇博士	Assistant Professor and Acting Dean of Studies, YCCECE 耀中幼教學院助理教授及署任學務長
Dr. Brad Chan 陳裕榮博士	Assistant Professor and Director (Student Development & Learning Resources), YCCECE 耀中幼教學院助理教授及學生發展及學習資源總監
Dr. Jane Lee, JP 李正儀博士，太平紳士	Former Director of the Hong Kong Sheng Kung Hui (Anglican) Welfare Council 香港聖公會福利協會前總幹事
Ms. Iqrah Khalid	Student of BEdECE Year 3, YCCECE 耀中幼教學院幼兒教育榮譽學士課程3年級學生



## Foreword by Professor Allan Yuen Hoi-Kau 袁海球教授序言

### Navigating Change and Embracing Growth: YCCECE's Commitment to Excellence in Early Childhood Education

I am honoured to present the annual report for the academic year 2021–22. Our institution has continued to flourish, despite challenges in the field of Early Childhood Education (ECE) across Hong Kong, the Greater Bay Area, and beyond.

Our mission to become the preferred ECE degree-awarding institution in Hong Kong has achieved significant progress. We are recognised for our high-quality programs, which support Hong Kong's strategic development, enabling students to achieve their life goals. Moreover, our faculty members continue to produce ground-breaking research, and our students excel academically while participating in meaningful extracurricular activities.

The ECE field continues to evolve. Today the emphasis is on high-quality, play-based learning; child-centred approaches; family engagement; and the integration of Chinese culture into the curriculum. Adapting to these new circumstances, we have expanded our infrastructure and resources, as well as including online learning platforms to support remote teaching and learning in the digital age.

At YCCECE, we foster a culture of innovation, collaboration and excellence. We believe our institution will play a crucial role in shaping ECE in Hong Kong and beyond. As we celebrate the milestone of Yew Chung Yew Wah's 90th Anniversary, our commitment to inspire change through education has never been stronger, and we have planned a host of ambitious projects to achieve and sustain our mission.

I would like to take this opportunity to express my heartfelt gratitude to all of you for your continued support and partnership, as we work together to realise our shared goals.

**Professor Allan Yuen,**  
President, YCCECE

### 引領變革，迎接成長：耀中幼教學院在幼兒教育致力 追求卓越的承諾

我很榮幸向大家展示2021–22學年的年度報告。儘管香港和大灣區，以至其他地區在幼兒教育方面挑戰重重，但我們的學院仍不斷茁壯成長。

我們要成為香港學生們首選的幼教學位頒授機構的使命，已取得長足進步。「耀中幼教」以其優質的課程著稱以配合香港的策略性發展，並讓莘莘學子實現人生目標。我們的專業教學團隊，更不斷推出開創性研究；學生們在學術上取得優異的成績的同時，亦投入具意義的課外活動。

幼兒教育正在蛻變中。現在，大家強調優質、遊戲中學習、以兒童為本、家庭參與以及將中國文化融入課程中。為了配合這些新趨勢，我們增加設施和資源，包括線上學習平臺，以支援數碼時代的遙距教學和學習。

在耀中幼教學院，我們培養創新、合作和卓越的文化。我們將在香港及其他地區的幼兒教育領域上擔當著舉足輕重的角色。在慶祝耀中耀華90周年的里程碑之際，我們對於藉著教育帶來改變的信念，從未如此堅定，為了實現目標與使命，我們正雄心壯志地籌備多個計劃。

我想借此機會向大家表達由衷的謝意，感謝你們一直以來的支持和合作，讓大家攜手朝著共同的目標邁進。

耀中幼教學院校長  
袁海球教授

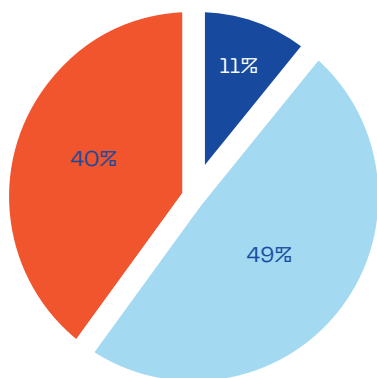


# Student Demographics

## 學生概覽



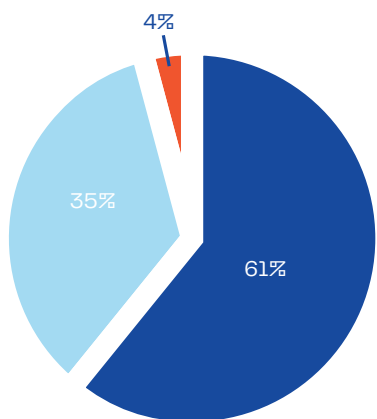
## Students in Different Programmes 各項課程學生人數



Students in Different Programmes

各項課程學生人數

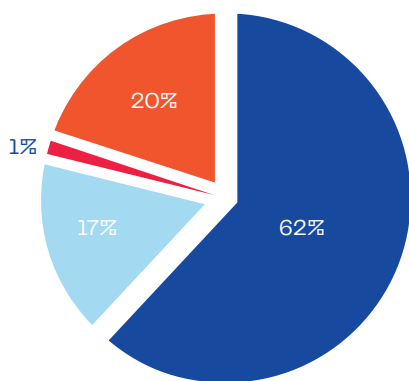
Students in Different Programmes	各項課程學生人數	
Total No. of Students	學生總人數	414
Diploma in Early Childhood Studies	幼兒學文憑	11%
Higher Diploma in Early Childhood Education	幼兒教育高級文憑	49%
Bachelor of Education (Honours) in Early Childhood Education	幼兒教育榮譽學士學位	40%



Age Range

年齡

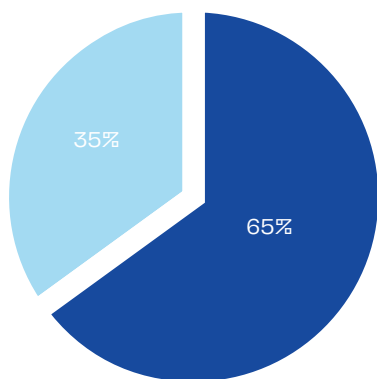
Age Range	年齡	
< 21 years old	<21歲	61%
>= 21-30 years old	>=21-30歲	35%
>= 31 years old	>=31歲	4%



First Language

第一語言

First Language	第一語言	
Cantonese	廣東話	62%
English	英語	17%
Putonghua	普通話	1%
Others	其他	20%



Ethnicity

族裔

Ethnicity	族裔	
Chinese	華裔	65%
Non-Chinese	非華裔	35%

# Local and Regional Development

## 本地和區域發展

### Local Development 本地發展

The College became the first self-financed institution of its kind in Hong Kong to offer a Certification Course for kindergarten principals. The course is recognised by the Education Bureau (EDB) and supported by our professional and experienced teaching team. It helps develop talents who aspire to become kindergarten principals, instilling the necessary leadership skills and essential knowledge. The College welcomed the first cohort on 22 October 2021, with the course providing students with 120 hours of instruction and an exclusive visit to the College's Pamela Peck Discovery Space for inspiration and to gain hands-on experience.

學院成為全港首間為幼稚園校長提供認證課程的自資院校。幼稚園校長證書課程獲得教育局的認可，並得到我們專業和經驗豐富的教學團隊的支援，有助培養志在成為幼稚園校長的人才習得領導技能和基本知識。學院於2021年10月22日招收了第一批學生。該課程為學生提供了120小時的指導，及專享機會參觀學院的耀學園，以獲得靈感和實踐經驗。

### Development on the Mainland 內地發展

During the year, the College has nurtured close ties with tertiary institutions across mainland China, following the signing of various memoranda of understanding. These institutions include: Nantong University, Shanghai Normal University, Fujian Normal University, Jiangmen Preschool Education College, and Ningbo Childhood Education College.

年內，學院與五所內地的大專院校建立密切聯繫並簽署了諒解備忘錄。這些院校包括南通大學、上海師範大學、福建師範大學、廣東江門幼兒師範高等專科學校、寧波幼兒師範高等專科學校。

### Zhejiang-Hong Kong Vocational Education Alliance 浙港職業教育聯盟

The College joined the newly established Zhejiang-Hong Kong Vocational Education Alliance. Moreover, a partnership with the Ningbo Childhood Education College was announced at the inauguration ceremony in September 2011, which deepens collaboration on professional development of students and staff from both institutions.

學院加盟新成立的浙港職業教育聯盟，並於2011年9月的開幕典禮上宣佈與寧波幼兒師範高等專科學校建立合作關係，深化兩所院校的師生在專業發展方面的合作。

### Strategic Partnership with Schools in the GBA 與大灣區院校的戰略合作

In 2021-22, Memorandum of Understandings were signed with five institutions – Nantong University, Shanghai Normal University, Fujian Normal University, Jiangmen Preschool Education College, and Ningbo Childhood Education College. The aim was to enrich staff development, as well as bolster research and student exchange. Strategic partnerships were planned and led by the Mainland Affairs Office.

2021-22年度，學院與五所院校簽署諒解備忘錄—南通大學、上海師範大學、福建師範大學、廣東江門幼兒師範高等專科學校、寧波幼兒師範高等專科學校，旨在提高教職員的發展水平，同時增強研究和學生交流的能力。該策略性合作由學院內地辦事處負責規劃和帶領。



# Congregation cum Honorary Fellowship Conferment 學位暨榮譽院士 頒授典禮 2021



# Congregation cum Honorary Fellowship Conferment 2021

## 2021年度學位暨榮譽院士頒授典禮

On 13 November 2021, the Congregation cum Honorary Fellowship Conferment 2021 celebrated over 100 graduates, including the second graduating cohort of the Bachelor of Education (Honours) in Early Childhood Education programme, as well as graduates from the Higher Diploma in Early Childhood Education and Diploma in Early Childhood Studies programmes.

學院於2021年11月13日舉行2021年度學位暨榮譽院士頒授典禮，慶祝超過百名畢業生完成學業，當中包括第二屆幼兒教育榮譽學士學位課程畢業生、幼兒教育高級文憑及幼兒學文憑課程的畢業生。



Graduating cohort read out the Graduation Pledge together at Congregation 2021  
畢業生在2021年度學位頒授典禮一同朗讀畢業誓詞



Professor Susan Ann Fowler

Professor Susan Ann Fowler, Professor Emeritus, Special Education at the University of Illinois, Urbana-Champaign  
伊利諾大學厄巴納-香檳分校特殊教育榮休教授 Susan Ann Fowler 教授

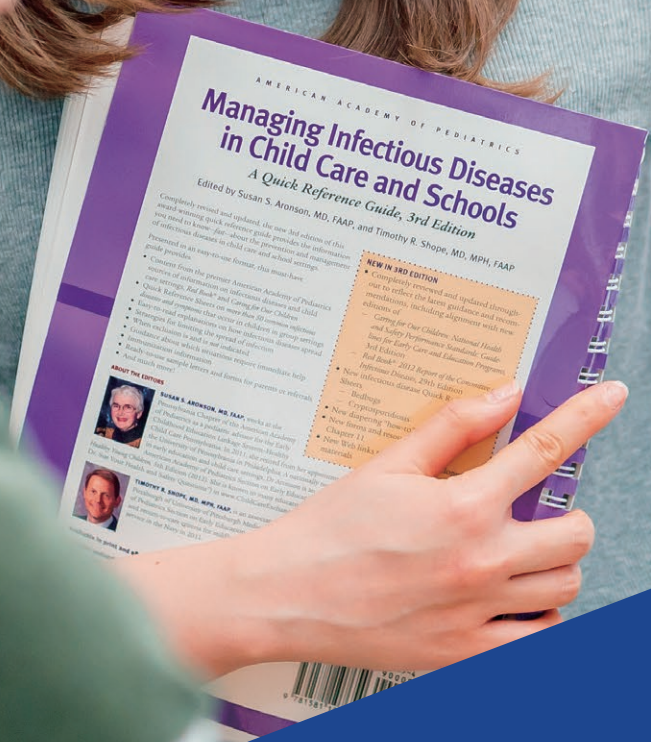
### YCCECE Hall of Fame 耀中幼教學院名人堂

Since the academic year 2019-20, the Honorary Fellowship Award has been conferred upon those distinguished persons for their outstanding contributions to the College and the community. Professor Susan Ann Fowler was awarded the honour at Congregation 2021 and joined the hall of fame with four other honorary fellows awarded in 2019 and 2020.

學院自2019-20學年起每年在畢業典禮頒授榮譽院士予對幼兒教育界及學院有傑出貢獻人士。在2021年，Susan Ann Fowler教授獲頒榮譽院士，並與另外四名於2019年及2020年獲授榮譽的院士一起成為學院名人堂一員。



# Strong Research Capabilities 雄厚的研究實力



# Spearheading project for the betterment of society

## 造福社會的引領項目

The research process accelerates our understanding about the pressing needs of the ECE community, as well as fosters knowledge-sharing among industry professionals. For this reason, the College has successfully sought more than 66 million dollars of external funding for research project since 2019. These projects cover a wide range of areas, including: the ECE quality framework and standards, an integrated child-care model, special education needs, e-learning and pedagogical innovation, language learning, plus augmented reality and STEM education.

研究過程使我們更快了解幼教圈內的迫切需求，並促進了行業專業人士之間的知識交流。自2019年以來，學院已成功為研究項目尋求超過6千6百萬港元的外部資金。這些項目涵蓋了一系列領域，包括幼教質量框架和標準、綜合托兒模式、特殊教育需求、電子學習和教學創新，語言學習和增強現實以及STEM教育等。

### Jockey Club 'CoolPlay' Project Launched to Empower Early Childhood STEM Education

推出賽馬會「智•幼•趣」計劃，旨在增強幼兒STEM教育能力

The Yew Chung College of Early Childhood Education (YCCECE) and the Vocational Training Council (VTC) have joined hands to launch the Jockey Club 'CoolPlay' Project, aimed at fostering STEM exploration among young children through a groundbreaking education kit and home-school community network.

Funded by The Hong Kong Jockey Club Charities Trust, the Jockey Club 'CoolPlay' Project will benefit 120 teachers, 345 pre-service teachers, and over 1,200 young children and families in 20 schools. The project emphasises interdisciplinary and play-based learning, using the newly developed "JumpStarter" STEM learning kit and establishes a supportive home-school community network.

The launch ceremony was held at the YCCECE campus, attended by key officials like Professor XU Kai, Mr. Leong CHEUNG, Dr. Betty CHAN, Professor Allan YUEN, and Dr. Lorraine TANG. Six pilot schools shared what they learned and exhibited school-based curricula, creative activities, and the progress they made after implementing the project.

The innovative "JumpStarter" education kit, the first of its kind in Hong Kong, includes a children's picture book, a teacher's guide, and a parent's guide, seamlessly integrating STEM learning across home, school, and community settings. Workshops, onsite support, and community activities are also provided to help teachers, pre-service teachers, and parents effectively use the kit.

耀中幼教學院與職業訓練局(職訓局)攜手推出賽馬會「智•幼•趣」計劃，旨在透過新穎的教育資源包及「家校社」網絡，促進幼兒探索STEM。

賽馬會「智•幼•趣」計劃由香港賽馬會慈善信託基金資助，惠及20間學校的120名教師、345名職前教師，以及超過1,200名幼兒和家庭。該計劃強調跨學科和遊戲為本學習，使用新開發的「JumpStarter」STEM學習工具包，並建立和衷共濟的「家校社」網絡。啟動禮在耀中幼教學院校園舉行，邀得徐凱教授、張亮先生、陳保琮博士、袁海球教授和鄧紹芬博士等主要人士蒞臨主禮。六所試點學校分享了他們的學習成果，並展示了校本課程、創意活動以及實施計劃的進展。

新穎的「JumpStarter」教學資源包是香港首個包含兒童圖書、教師指南和家長指南的同類工具包，將STEM學習無縫整合到「家校社」環境中。項目還提供研討會、現場支援和社區活動，以幫助教師、職前教師和家長有效地使用該套資源。

Jockey Club Project  
**'CoolPlay'**  
賽馬會「智•幼•趣」計劃



## Jockey Club 'CoolPlay' Project's STEAM Fun Fair Brings Creative Learning to Nearly 700 Families

賽馬會「智•幼•趣」計劃親子STEAM探索嘉年華為近700名家庭帶來創意學習

The Jockey Club 'CoolPlay' Project successfully hosted a Parent-Child STEAM Fun Fair at VESSEL 03, Kwun Tong Promenade, on 29th May, where close to 700 children and parents had the opportunity to learn and play together through STEAM exploration games.

The Fun Fair featured eight activity booths, designed and executed by the YCCECE's pre-service teachers, focusing on the theme of "water" and the upcoming Dragon Boat Festival. Each booth aimed to enhance parents' ability to facilitate their children's STEAM learning at home by demonstrating inquiry-based learning techniques and providing helpful tips. Activities included creating unique dragon boats, exploring the science of bubbles, and constructing ideal homes on a shared canvas.

Family bloggers were invited to the event, resulting in a significant increase in social media engagement. The Fun Fair received 309 Facebook page likes and high praise from parents, scoring 5.88 out of 7. This positive feedback underscores the success of the event in promoting STEAM education among young children and their families.

In addition to the hands-on activities, the Fun Fair also included a STEAM reading corner with over 20 children's books related to water. This allowed children and parents to explore the connection between language development and STEAM concepts, further sparking curiosity and interest in STEAM subjects.

The Jockey Club 'CoolPlay' Project's Parent-Child STEAM Fun Fair was a resounding success, providing a fun and educational experience for nearly 700 children and parents. The event not only fostered interest in STEAM subjects but also encouraged families to continue their exploration and learning journey at home, ensuring the long-term impact of the project on the future of STEAM education.



賽馬會「智•幼•趣」計劃於5月29日在觀塘海濱長廊VESSEL發現號03成功舉辦親子STEAM探索嘉年華，近700名兒童及家長有機會透過STEAM探索遊戲一起學習和玩耍。

是次活動設有8個幼兒STEAM遊戲攤位，由耀中幼教學院職前教師設計及組織，以「水」及即將到來的端午節作主題。每個攤位都旨在通過展示探究式學習技巧和提供實用建議，提高家長在家促進孩子學習STEAM的能力。活動包括創造特色的龍舟，探索泡泡科學，以及在共享畫布上建造理想的家園。

此次活動邀得家庭博主參與，社交媒體參與度顯著增加。嘉年華令計劃的Facebook專頁獲得了309個讚好和家長的高度讚揚，得分為5.88分(滿分7分)。這種積極的反饋凸顯了活動成功向幼兒及其家庭推廣STEAM教育。

除了實踐活動外，嘉年華會還設有一個STEAM閱讀角，現場展出有20多本與水有關的兒童書籍，使孩子和家長能夠探索語言發展與STEAM概念之間的聯繫，進一步激發對STEAM科目的好奇心和興趣。

賽馬會「智•幼•趣」計劃親子STEAM探索嘉年華取得圓滿成功，為近700名兒童及家長帶來既有趣又富教育意義的體驗。活動不但促使家庭成員對STEAM科目培養興趣，亦鼓勵他們在家延續探索和學習之旅，確保計劃對STEAM教育的未來產生長遠影響。





### “CoolPlay” Project Unveils Success at 2022 Early STEM International Conference with Over 700 Participants

賽馬會「智•幼•趣」計劃「2022幼兒STEM國際研討會」圓滿舉行，吸引超過700名參與者

The Jockey Club “CoolPlay” Project successfully hosted the 2022 Early STEM International Conference, which featured prestigious guest speakers and attracted over 700 attendees online, further promoting high quality early STEM education.

The conference invited Prof. Marilyn Fleer from Monash University and Prof. Jie-Qi Chen from Erikson Institute, Chicago, as guest speakers. These two esteemed professors shared valuable research findings and insights, enhancing understanding and fostering international collaboration in early STEM education. Over 700 participants attended the conference online, highlighting its importance and impact in the field.

As a part of the conference, participants engaged in interactive discussions, sharing their experiences and exploring the various challenges of implementing early STEM education. This collaborative environment allowed for a deep dive into the practicalities of early STEM education, which can be applied across a host of educational settings and platforms.

The Jockey Club “CoolPlay” Project, sponsored by the Hong Kong Jockey Club Charities Trust, is a three-year initiative co-hosted by the Yew Chung College of Early Childhood Education and the Vocational Training Council. The project aims to provide suitable teaching resources, foster a robust home-school-community network, and promote quality early STEM education examples in Hong Kong.



賽馬會「智•幼•趣」計劃「2022幼兒STEM國際研討會」圓滿舉行，邀請了多位演講嘉賓，吸引超過700名網上出席者，進一步推廣優質幼兒STEM教育。

研討會邀請了莫納什大學的Marilyn Fleer教授和芝加哥埃里克森研究所的陳杰琦教授作為演講嘉賓。兩位德高望重的教授分享了寶貴的研究成果和見解，增進了與會者對幼兒STEM教育的理解並促進了國際合作。超過700名出席者在線參加了研討會，印證研討會在該領域的重要性和影響。

研討會上，與會者進行了互動討論，分享了他們的經驗並探討了實施幼兒STEM教育的各種挑戰，讓大家更深入研究幼兒STEM教育的實用性，並應用於各種教育環境和平台。

賽馬會「智•幼•趣」計劃由香港賽馬會慈善信託基金贊助，並由耀中幼教學院與職業訓練局攜手推出，為期三年，旨在於香港提供合適的教學資源，建立強大的「家校社」網絡，並推廣優質幼兒STEM教育示範。

## Innovative RITE Model Developed in Conjunction with the Children Residential Home Revamp Project

### 童樂居服務重整計劃創新RITE理論模型

The “Children Residential Home Revamp Project” aims to enhance the quality of residential childcare services for infants and toddlers covering different aspects, including human resources, educare and support for children, the environment, and leadership. Based on current empirical evidence, the YCCECE’s expert team has developed a new Residential Infants and Toddlers Educare Model (RITE model) to guide quality enhancements. Specifically, with more than 90 indicators, the RITE model illustrates quality standards across four domains – “Leadership and Management”, “Human Resources”, “Quality Educare”, and “Professional Development”. This model enables residential childcare services to conduct systematic and rigorous self-evaluation and self-improvement, and also supports regulatory bodies in their quality assurance work.

「童樂居服務重整計劃」旨在從人力資源、教育和兒童支援、環境和領導力等不同方面提高嬰幼兒住宿托兒服務的品質。根據現時的經驗實證，耀中幼教學院專家團隊開發了一套新模型，即RITE (Residential Infants and Toddlers Educare) 理論模型，以指導品質提升。具體而言，RITE模型通過90多個指標說明了四個領域的品質標準：領導力和管理、人力資源、優質教育和專業發展。這套模型使住宿托兒服務能夠進行系統化、嚴謹的自我評估和自我完善，並支援監管機構的質量保證工作。



## Home and School-based Through-train Support Model for Kindergarten to Primary Transition

### 幼稚園至小學過渡期家與校「一條龍」支援模式

A 2-year project to set up a home and school-based “through-train” support model for Kindergarten-to-Primary (“K2P”) transition was established for six kindergartens and three primary schools.

Sponsored by Lee Hysan Foundation, The YCCECE and Wofoo Social Enterprises are working together to lessen social-emotional stress among everyone involved in the transition from kindergarten to primary school, including students, teachers, and parents. This project promotes school readiness and equips students with a positive response for a new learning environment. It also includes a series of story-telling sessions. Reading stories with social-emotional themes helps children to develop empathy for the stories’ characters and how they relate to their own lives. Their vocabularies for feelings are also developed through discussions about the causes of different emotions. After attending the reading aloud training workshop on the ‘whole book’ approach, the YCCECE student teachers and alumni have been delivering interactive story-telling activities to 390 kindergarteners since January.

該項目為期兩年，旨在為六間幼稚園和三間小學建立幼兒升讀小學家與校「一條龍」支援模式。

由利希慎基金贊助，耀中幼教學院與和富社會企業攜手合作，減輕學生、教師和家長從幼稚園到小學過渡期中面對的社會情緒壓力。項目為學童入學做好準備，並讓他們積極應對新的學習環境，並提供一系列講故事環節。閱讀以社會情感為主題的故事有助於孩子培養對故事人物的同理心，並與他們自己的生活聯繫起來。他們之所以能認識到表達情感的詞彙，也是通過討論不同情感的成因而累積起來的。耀中幼教老師學生和校友自1月起參加「全書」法朗讀培訓工作坊，以互動形式為390名幼稚園學生講故事。

## Integrated Model to Elevate Childcare Centre Quality

綜合模式以提升幼兒中心質素

The Jockey Club “Bright Start” Project is a 3-year initiative funded by the Jockey Club Charities Trust to support and elevate the quality of childcare centers in Hong Kong. The project designed and implemented an integrated model to empower teachers and parents to nurture care and learning for infants and toddlers using a multi-disciplinary approach that includes providing health care from pediatricians and nurses, capacity building for teachers, facilitating evidence-based strategies among parents and the public, developing a curriculum framework appropriate for one to three-year-olds, and creating a digital platform to streamline the Center’s operations and administrative procedures.

The project started in November 2021, with over 100 hours of curriculum and educare training for the Center’s teachers. The research team monitored and evaluated progress on various aspects, including conducting child development assessments of over 300 children, carrying out onsite observations of teacher-child interactions, and holding consultations on the implementation of various curriculum approaches. In addition to providing support to stakeholders of the childcare centers, five public talks were arranged with speakers that included pediatricians, educators and experts from different fields. Preliminary research findings were presented at the Learning & Teaching Expo 2022 and at the annual conference of the American Educational Research Association.



賽馬會「幼兒喜步」計劃由賽馬會慈善信託基金資助，為期三年，旨在支援和提升香港的幼兒中心質素。計劃的設計採用了綜合模式，使教師和家長能夠通過多學科方法培養嬰幼兒護理和學習能力：這包括由兒科醫生和護士提供醫療保健，提升教師能力，促進家長和公眾的循證戰略，制定適合1-3歲幼兒的課程框架，並創建一個數位化平台簡化幼兒中心的營運和行政程序。

計劃於2021年11月啟動，為中心教師提供了100多個小時的課程和教育培訓。研究團隊監察及評估各方面的進展，包括對逾300名兒童進行兒童發展評估、現場觀察師生互動，以及就各種課程方法的實施進行諮詢。除了為托兒中心的服務人員提供支援外，還安排了五場公開講座，邀請了不同領域的兒科醫生、教育工作者和專家。初步研究結果在2022年學與教博覽和美國教育研究協會年會上展示。





# Community Outreach 共建社區

Pamela Peck Discovery Space (PPDS) is an experiential lab at the College, providing active and positive contributions to society by participating in local community activities. It works closely and in collaboration with all academic staff, ensuring every opportunity for pre-service educators to brainstorm, initiate, and implement various projects, ideas, and strategies for community improvement, especially in the area of early childhood development.

耀學園是學院的教學體驗實驗室，通過參與社區活動為社會積極正面地做出貢獻。耀學園與學院教學人員密切合作，確保職前教育工作者有機會參與創作、推動和實施為社區進步特別是在幼兒領域的不同項目、想法和策略。



# Pamela Peck Discovery Space

## 耀學園

It is also a specialist play space on campus designed for children and families from newborn infants up to age eight, aimed at actively promoting innovative best practices in early childhood education. Through a wide array of uniquely designed creative indoor and outdoor experiential learning activities, children and their caregivers can enjoy quality bonding time while exploring and learning through play, and create positive lifelong memories together.

The operation of PPDS was disrupted by COVID-19 and it opened only intermittently, with complete closure from February to April 2021. It was reopened on 3 May with reduced capacity, following the government policy announcement to re-open schools.

耀學園是校內專為初生至8歲的嬰幼兒及其家長而設的專業遊戲空間，旨在積極推動幼兒教育中創新的最佳實踐。透過一系列獨特設計的創意室內和室外體驗式學習活動，孩子和照顧者可在享受優質親子時間的同時，寓探索與學習於遊戲，並一齊創造美好難忘的回憶。

耀學園的營運受到2019冠狀病毒病的影響而間歇性開放，並於2021年2月至4月完全關閉。在政府宣佈重新開放學校後，耀學園於5月3日恢復開放。



# 40,000+

Over 40,000 visitors  
超過40,000位訪客

# 300+

Over 300 sessions, including public sessions, special play programmes such as the Infant & Toddler “Playgroup”, and special sessions such as Intergeneration Play Day and the JC CoolPlay Project.

超過300場活動，包括公開活動、嬰幼兒「遊樂園」、老幼同玩日和賽馬會「智•幼•趣」計劃等特別場次。

Innovative online version of the PPDS launched during the COVID-19 pandemic, including:

Learn from Home programme ran from February to April 2021. Twelve live webinars were hosted with Centre Teachers conducting learning activities via a digital platform.

Curated by early childhood education professionals at the YCCECE comprising the first of twelve fun-filled 30-min on-line learning webinar sessions, it focused on areas like: COVID-19 Care, STEAM, wellness at home, literacy, numeracy, and creative arts, all delivered to adults who work from home and have young children. Additionally, twelve 5-minute “Parent-Child DIY Fun” short videos were created and published throughout the series to help parents unleash their children’s creativity through craft ideas using simple, common household items. To date, the College has received more than 2,200 registrations from parents, caregivers, and early childhood educators.

在2019冠狀病毒病爆發期間推出的創新耀學園在線版本，包括：

「居家童學」計劃於2021年2月至4月進行。共舉辦了12場直播網絡研討會，中心教師通過數碼平台開展學習活動。

「居家童學」親子網上學習課堂系列由耀中幼教學院的幼教專家所策劃，精心設計出共12節每節30分鐘刺激感官的遊戲與活動，當中包括：2019冠狀病毒病幼兒護理、STEAM教學、居家健康教育、親子閱讀、算術以及創意藝術六大課題。而「居家親子DIY小手作短片」同樣設有12節，每節5分鐘的短片透過利用簡單常見的家居物品，讓家長幫助孩童好好盡情發揮其創意。學院收到超過2,200位家長、照顧者或幼教工作者已登記是次課堂系列。





# Continuing and Professional Development (CPD)

## 持續專業進修教育

To support the professional development of in-service teachers, the College organises continuing and professional development (CPD) courses for instructors or other ECE professionals who have been working in the field.

Due to COVID-19 restrictions, the offer of face-to-face CPD courses was suspended until the online course could be recognised by the Continuing Education Fund (CEF). During the year, a total of 16 CPD courses were offered to about 300 participants in Hong Kong and mainland China.

In addition to the popular Certificate in Child Caregiving course, two other courses were introduced that marked a milestone in the College's history. The Certification Course for Kindergarten Principals was launched and is now recognised by the EDB as one of only three tertiary institutions as well as Hong Kong's first paid-institution to offer this course for in-service teachers.

Another popular course is the Chinese linguistic course for in-services kindergarten teachers approved by SCOLAR.

Apart from these courses, the College also organised six seminars and webinars, recording a total of about 65,000 logins or participants from Hong Kong, mainland China and other regions. The signature event was the webinar - 'Connecting Learning: Using MOVERS to support physical and child development in 2-6 years old,' featuring Professor Iram Siraj from Oxford University as the keynote speaker, together with other teachers, including Professor Yuan Jinxia from Nanjing Normal University, and Ms Zhang Dandan, YCCECE adjunct lecturer and senior researcher at Chor Hang Educational Research Institute (CHERI), to share their experience and case histories.

為支持在職教師的專業發展，學院為一直在有關領域工作的教師或其他幼教專業人員舉辦持續專業進修課程。

受2019冠狀病毒病影響，在持續進修基金(CEF)認可在線課程之前，學院一度暫停提供面授持續專業進修課程。年內，學院一共為香港及內地約300名學員開辦了16個持續專業進修課程。

除了備受歡迎的嬰幼兒照顧證書課程外，學院年內推出了兩個持續專業進修課程，標誌著學院歷史上的又一個里程碑。其中之一是開辦「幼稚園校長認證課程」，使學院成為教育局認可的三所大專院校之一，也是全港首間為在職教師開辦此課程的自資院校。

另一個新推出的課程是語文教育及研究常務委員會(SCOLAR)所批准為在職幼稚園教師而設的中國語文課程。

除課程外，學院舉辦了六場講座和網上研討會，共吸引了來自香港、中國內地和其他地區約65,000人登錄或參與。最具特色之環節是名為「Connecting learning: Using MOVERS to support physical and child development in 2-6 years old」的網上研討會，牛津大學Iram Siraj教授為該研討會的主講人，其他教師包括南京師範大學袁金霞教授和耀中幼教學院兼職講師兼楚珩教育研究所高級研究員張丹丹女士，分別分享了他們的經驗和案例。

# Giving to College

## 支持學院發展



The YCCECE is deeply committed to nurturing the next generation of passionate and inspired ECE professionals. To this end, the generous support from our benefactors is vital to the ongoing development of the College. Together with the increasing numbers of students, the College strives to become a major force in the advancement of early childhood education.

耀中幼教學院的首要使命是透過優質的課程培育新一代富熱誠、品質優的幼教工作者。憑着善長仁翁的鼎力支持，學院得以不斷發展、學生人數與日俱增，我們將成為推動幼兒教育的中堅力量。





Funding from the private and social sectors has helped the College provide additional enrichment opportunities for our students to bridge the gap between research and practice. Valuable partnerships as well are empowering future ECE teachers along with young children's development across a broad spectrum, including community education, linguistic training, special education needs, infants and toddlers education, special engagement services, and STEM knowledge acquisition.

私營和社會企業的資金幫助學院為學生提供更多機會豐富學習經歷，縮小研究和實踐之間的鴻溝。寶貴的合作夥伴關係亦在多個方面促進未來的幼兒教育教師和幼兒發展，包括社區教育、語言訓練、特殊教育需要、嬰幼兒教育、特殊參與服務和STEM知識獲取。

## 01 Naming ceremony of the Wofoo Student Learning Commons 和富學生學習共享空間命名儀式

The Student Learning Commons at the College holds a special place in the hearts of each and every YCCECE attendee as it is where students spend most of their time while pursuing their early childhood teaching dream. Blessed with generous donations from Wofoo Social Enterprises Chairman Dr Joseph Lee, GBS, OstJ, JP; and Director of Wofoo Social Enterprises Ms Christina Lee, the commons was renamed the Wofoo Student Learning Commons.

和富學生學習共享空間在每個耀中幼教學院學生心目中都佔有特殊位置，因為這是學生在追逐幼教老師夢想時逗留最長時間的地方。在和富社會企業會長李宗德博士金紫荊星章太平紳士及和富社會企業董事李美辰女士的慷慨捐助下，這個公共空間正式命名為「和富學生學習共享空間」。



## 02 Library renamed as 'Kidsploration Library' 耀中幼教學院圖書館命名為「童遊圖書館」

Following the success of the Distinguished Yew Chung Educators campaign, the College library adopted a new name – 'Kidsploration Library'. A naming ceremony was held to recognise the legacies and contributions of our educators, past and present, as well as to pay homage for the support from our community.

廣獲善長熱心支持的耀中教育家計劃，讓耀中幼教學院圖書館得以命名為「童遊圖書館」。學院特別舉行命名儀式，以紀念耀中教育家在幼兒教育界的重要貢獻。

# The Power of Giving

## 捐贈的效力

### 03 Chan Dang Social Services Foundation Awards 陳登社會服務獎勵計劃

Nine students were shortlisted for the inaugural Chan Dang Social Services Foundation Award, and were offered a structured learning experience to better understand and address social issues through community service engagements.

九位獲得首屆陳登社會服務計劃獎的學生獲得有系統的學習體驗，並透過參與社區服務，了解及關注社會問題。

### 04 Scholarship Donation from the MTR Corporation Ltd 香港鐵路有限公司獎學金捐贈

The MTR Corporation provided a gift of HK\$100,000 to the College in support of the Award for Academic Excellence (MTR) scholarship. In addition, the MTR supported the upgrading of facilities at the Pamela Peck Discovery Space. As a result, future teachers will be able to benefit from this inaugural monetary gift as well as the teachers, children, and parents from the PPDS, who will enjoy a more realistic, experiential learning opportunity at the upgraded MTR corner play area.

學院獲得港鐵公司捐贈港幣100,000元作為獎學金，並支持升級耀學園(PPDS)的設施。港鐵公司的獎學金為準教師帶來最直接的鼓勵；而耀學園的教師、孩子和家長也能夠在升級後的港鐵角遊樂區享受更真實的體驗式學習機會。

### 05 Scholarship & Bursary Support from the Right Line Foundation 歐航慈善基金慷慨支持學院獎學金及助學金計劃

The College received a HK\$1,800,000 pledge from Mr Keith Lee, Director of the Right Line Foundation, who is also the co-chair of the Parent Fundraising Committee at the Yew Chung International School Hong Kong. This donation will go towards scholarships and bursaries support and will allow many students to study early childhood education programmes despite their strained financial circumstances. The Entrance Scholarship (Right Line Foundation) will support YCCECE students who aspire to become high quality future teachers in Hong Kong through a quality education. In addition to scholarships, the College is also grateful for the Foundation's support towards the bursary scheme, which will provide vital financial help to marginalised students, allowing them to better focus on their academic pursuits.

耀中幼教學院獲得由歐航慈善基金董事長兼香港耀中國際學校家長籌款委員會聯席主席李國賢先生的一百八十萬港幣慈善承諾捐贈。該筆捐贈將用以成立「入學獎學金(歐航慈善基金)」，惠及許多優秀的學生，無論其經濟狀況如何，均可以入讀專業的幼兒教育課程，幫助那些渴望未來在香港成為教師的學生接受優質的幼兒教育。除獎學金以外，學院還感謝基金會對助學金計劃的支持，這將為弱勢學生提供重要資助，使他們能夠專注於學業。



# Gifts and Projects : An Overview

## 捐獻和項目：概述

We would like to take this opportunity to express our gratitude to the many individuals and groups who have generously provided funds for key projects and activities at YCCECE. Their contributions have been instrumental in helping us achieve our goals, and we cannot thank them enough. We believe that their generosity has inspired a new generation of supporters, and we hope to continue building on their legacy.

We would like to acknowledge the following key individuals and organizations who supported us during the 2021-22 academic year:

我們借此機會向眾多慷慨捐獻的人士和機構致謝，他們不單支持我們的重要項目和活動，並在我們實現目標方面起著了關鍵作用。聊聊數字實難表達我們由衷的謝意。我們相信他們的善行會啟發新一代支持者，亦希望繼續傳承和發揚他們的大愛。

讓我們向以下在2021-22學年中支持我們的主要善長致謝：

Individuals/Organisations* 捐獻人士 / 機構*	Designation of Gift 資助意向
Chan Dang Social Services Foundation 陳登社會服務基金	Community Project 社區項目
CLP Power HK Ltd 中華電力有限公司	Yew Chung Promise <sup>3</sup> 耀中承諾基金
Dr. Henry H.K. Chan 陳顯強醫生	Yew Chung Promise <sup>3</sup> 耀中承諾基金
Dr. Betty Chan Po-king 陳保琮博士	Research 研究項目
Ms. Chiang Lai Wan 蔣麗芸女士	Yew Chung Promise <sup>3</sup> 耀中承諾基金
Drs. Richard Charles & Esther Yewpick Lee Charitable Foundation 利銘澤黃瑤璧慈善基金	Scholarships & Bursaries 獎學金及助學金
Hong Kong Christian Service 香港基督教服務處	Community Project 社區項目
Hong Kong Institute of Sino-Western Integrated Education Limited 香港東西融合教育研究院有限公司	Yew Chung Promise <sup>3</sup> , Scholarships & Bursaries 耀中承諾基金、獎學金及助學金
Hong Chi Association 匡智會	Community Project 社區項目
Lee Hysan Foundation 利希慎基金	Research 研究項目
Ms. Hong-mei Li 李紅梅女士	Yew Chung Promise <sup>3</sup> 耀中承諾基金
MTR Corp Ltd 香港鐵路有限公司	Scholarships & Bursaries 獎學金及助學金
Right Line Foundation Limited 歐航慈善基金	Scholarships & Bursaries 獎學金及助學金
The Hong Kong Jockey Club Charities Trust 香港賽馬會慈善信託基金	Community Project 社區項目

# Gifts and Projects : An Overview

## 捐獻和項目：概述

Individuals/Organisations* 捐獻人士 / 機構*	Designation of Gift 資助意向
The Hong Kong Polytechnic University/Hong Kong Jockey Club 香港理工大學 / 香港賽馬會	Community Project 社區項目
Wofoo Foundation 和富慈善基金	Research 研究項目
Yew Chung and Yew Wah Friends Association Limited 耀中耀華之友協會有限公司	Yew Chung Promise <sup>3</sup> 耀中承諾基金
Yew Chung Education Foundation 耀中教育機構	Scholarships & Bursaries, Pamela Peck Discovery Space 獎學金及助學金, 耀學園

\*Note 註:

1. in alphabetical order  
根據英文字母順序
2. List above includes donations that are equal to or greater than HK\$100,000  
上表只列出十萬元或以上之捐贈
3. To support areas with most pressing needs  
支持需求最大的項目



We would also like to express our appreciation to the donors who wish to remain anonymous. Their contributions have been equally important and have helped us greatly in achieving our goals.

我們還要向默默捐獻的無名善長表示感謝，他們的捐獻同樣珍貴，在我們實現目標的路途上發揮重要作用。



# Building a Culture of Philanthropy 建設慈善文化

Your contributions have had a profound impact on our institution, and we are deeply grateful for your continued support.

您們的捐獻為耀中幼教學院帶來深遠而積極的影響，我們由衷地感謝您們不懈的支持。



**Ms. Chiang Lai Wan**  
**Chairman of New Generation Nurture Fund Limited**  
新世代培育基金有限公司主席  
蔣麗芸女士



Early childhood education is not only essential for preparing young children for school, but it also lays the groundwork for lifelong learning and holistic well-being. At YCCECE, we provide quality programmes to nurture dedicated and passionate ECE professionals who will profoundly influence the lives of young children and their families.

It has been my privilege to support YCCECE over the years, and I eagerly anticipate continuing this collaboration in the future.

幼兒教育不僅對於裝備年幼兒童進入學校至關重要，而且為終身學習和全人福祉奠定基礎。在耀中幼教學院，我們提供優質的課程，培養熱誠和專注的幼教專業工作者，他們將積極地影響年幼兒童及其家庭的生活。

多年來，我有幸支持耀中幼教學院，並熱切期待未來繼續緊密合作。



**Ms. Christina Lee, JP**  
**Director, Wofoo Foundation**  
和富慈善基金董事  
李美辰太平紳士



Wofoo Foundation is committed to supporting the youth, caring for the elderly, and fostering a better Hong Kong.

The Foundation has teamed up with the College to support scholarship programmes, community outreach activities, and ECE research projects.

These projects have, and will create benefits for both future teachers at YCCECE and young children, contributing to the positive development of our society.

和富慈善基金致力於支援青少年、關愛長者，建構更美好的香港。

基金與學院緊密合作，支持學院的獎學金計劃、社區外展活動和幼兒教育的研究項目等。

這些項目惠及耀中未來的教師和小朋友，為我們社會的積極發展做出貢獻。





**Mr. Keith Lee**  
**Founder, Right Line Foundation**  
 歐航慈善基金創始人  
 李國賢先生



I am honoured to be part of the important scholarship and bursary support for YCCECE students.

This involvement has a special meaning for me as Co-Chair of the Parent Fundraising Committee at YCIS Hong Kong.

The College has a noble endeavour to nurture future teachers. It is delightful to help those in need to achieve their goals in the field of early childhood education.

我很榮幸能夠為耀中幼教學院的學生提供獎學金和助學金。

作為香港耀中國際學校家長籌款委員會的聯席主席，是次的參與對我別具意義。

學院為培養未來的教師有著崇高的使命。我很高興可以幫助那些有需要的年輕人，實現他們在幼兒教育領域的理想。



**Ms. Melody Qu**  
**Director, Hong Kong Institute of Sino-Western Integrated Education Limited**  
 香港東西融合教育研究院有限公司董事  
 瞿子涵女士



We reached an agreement with YCCECE and established Qu Zihan Sino-Western Integrated Scholarship for Early Childhood Education to assist financially challenged students.

Both institutions share the same passion and vision in promoting the growth of early childhood education. In the name of great love, we will continue to support the development of early childhood education, and support the development of YCCECE, to provide a wonderful learning environment for more caring and ideal students.

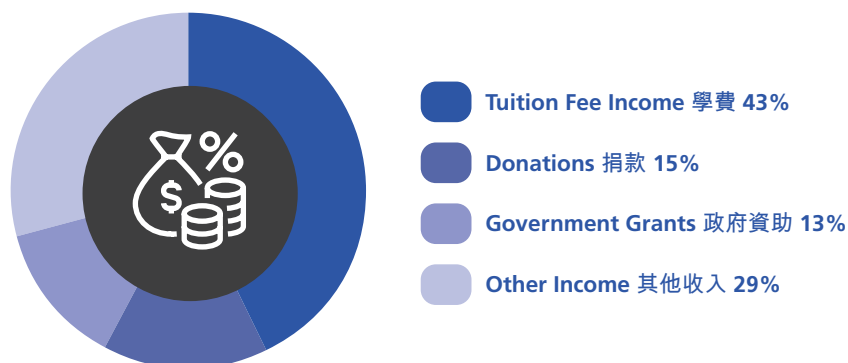
我們與耀中幼教學院達成協議，「設立瞿子涵東西融合耀中幼教獎學金」，資助有經濟需要的學生。

耀中幼教學院跟我們機構擁有共同的熱忱和遠見，深切關注和支持幼教發展，我們期待持續一起塑造社會未來的大愛使命。以愛之名，我們將一如既往支持耀中幼教學院，讓更多富有愛心與理想的學生擁有美好的學習環境。



**OPERATING INCOME, DONATIONS & GOVERNMENT GRANTS**

營運收入、捐款及政府資助



Operating Income, Donations & Government Grants	營運收入、捐款及政府資助	2021-22	
		HK\$'000 千港元	%
Tuition fee income	學費	22,568	43%
Donations	捐款	7,851	15%
Government grants	政府資助	6,720	13%
Other income	其他收入	15,009 <sup>^</sup>	29%
		52,148	100%

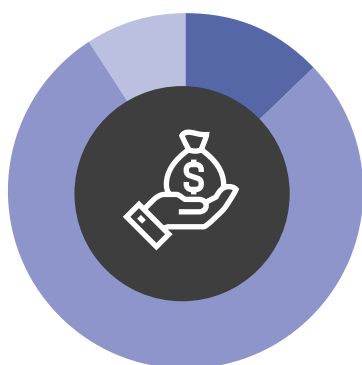
Note  
備註

<sup>^</sup> Other income included contract research project income of \$11.6 million.  
其他收入包含科研合約項目收入之1,160萬元。



## DONATIONS & GOVERNMENT GRANTS DESIGNATION

### 捐款及政府資助用途

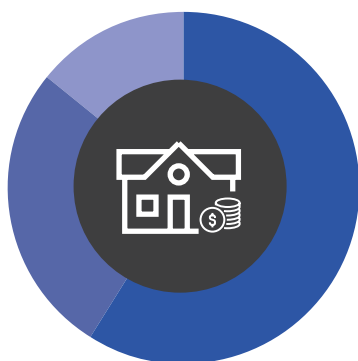


- Capital Development 建設發展 0%
- Scholarship & Bursary 獎學金及助學金 13%
- Teaching, Learning & Research 教與學及研究 78%
- Yew Chung Promise (Undesignated) 耀中承諾 (無指定用途) 9%

Donations & Government Grants Designation	捐款及政府資助用途	2021-22	
		HK\$'000 千港元	%
Capital development	建設發展	23	0%
Scholarship & bursary	獎學金及助學金	1,848	13%
Teaching, learning & research	教與學及研究	11,422	78%
Yew Chung Promise (undesignated)	耀中承諾(無指定用途)	1,278	9%
		14,571	100%

## OPERATING EXPENSES

### 營運開支



- Teaching, Learning & Research 教與學及研究開支 59%
- Premises & Related Expenses 校舍及有關開支 27%
- General & Administrative 一般及行政開支 14%

Operating Expenses	營運開支	2021-22	
		HK\$'000 千港元	%
Teaching, learning & research	教與學及研究開支	48,652	59%
Premises & related expenses	校舍及有關開支	22,401	27%
General & administrative	一般及行政開支	11,783	14%
		82,836	100%



YEW CHUNG COLLEGE OF EARLY CHILDHOOD EDUCATION  
耀中幼教學院

2 Tin Wan Hill Road, Tin Wan, Aberdeen, Hong Kong  
香港香港仔田灣田灣山道二號

(852) 3977 9877  
(852) 9312 0733  
(852) 2338 4320  
enquiry@yccece.edu.hk  
www.yccece.edu.hk

YCCECE is a member of the Yew Chung Education  
Foundation (YCEF), both are registered non-profit  
organisations in Hong Kong  
耀中幼教學院為耀中教育機構成員，兩者均為香港註冊非牟利團體

