

Pamela Peck Discovery Space

A play space for children and families from birth to 8



FROM ANA'S & JOAN'S DESK



Ana Aracelly Olguín,
PhD in Curriculum & Instruction UIUC
Centre Director, YCECDC

The space was still under construction when I first came to the YCCECE campus in January 2019. It feels like not long ago when a handful of staff opened boxes of resources and tirelessly set up all our intentionally designed areas for our guests, tester schools and families.

During these 3 years, we have the honours of being part of the fun journey with over 10,000 families, various organisations & schools. Our team does not forget why we are here, and we are driven by a great passion in early childhood education, regardless of race, ability or background, we vision to provide a platform for families and communities to learn and enrich their understanding about play.

We cannot wait to have more empowering journey and adventures with you all!

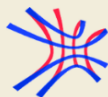
Dear PPDS Families: This is truly a special edition, our very first edition! For the safety of all, right now PPDS (the physical space) is closed, but the PPDS vision is still very much active! In this newsletter, see what we do, meet our amazing teacher-curators, and the rest of the team that makes PPDS a haven for free-play. We miss the intertwined voices of families filling the space with inquiry, wonder, learning, and joy! We can't wait to have you visit us again, but for now won't you visit us virtually? Read on and learn how!

Warmly yours,

Ana



Joan Chan
Centre Manager, YCECDC



YEW CHUNG COLLEGE
OF EARLY CHILDHOOD EDUCATION
耀中幼教學院

Meet the team



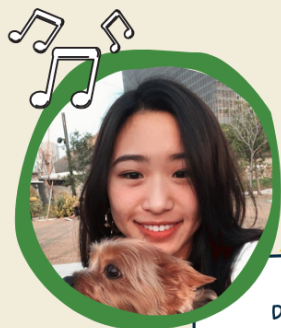
MANDY CHOY, CENTRE TEACHER

I enjoy seeing all the happy faces from all the families. They are like friends that come visit us, and we can share our ups and downs together. Especially during the pandemic, every time we meet we give each other support. During their visits here, families seem to forget all their stress and enjoy a happy, playful time.



TERESA-ANNE CHEUNG, CENTRE TEACHER

"It is always a pleasure to see children and their families leave Discovery Space with joy on their faces. Their enthusiasm makes me happy and inspires me daily. It's incredibly meaningful to interact with the wonderful families and work with them to create the best experience for their children while promoting free-play."



CALISTA WONG, CENTRE TEACHER

Discovery Space (PPDS) is an amazing place, we offer children and families rich environments to explore during free play. Children and their families can explore everything by themselves, cultivating a wide variety of talents.



BRIELLA CHAN, CENTRE TEACHER

Working at PPDS has always been inspiring. Children embrace and express their creativity while initiating play. The variety of learning areas in the space allow each unique child to create hundreds of play possibilities. We are always learning together because of our little ones' brilliant ideas.



KARLY LI, ADMINISTRATIVE ASSISTANT

Discovery Space provides opportunities for children and parents to explore with interaction. I hope parents and children enjoy the amazing moments in Discovery Space!



DAISY LEUNG, JANITOR

I am responsible for keeping the beautiful play environment clean for the enjoyment and safety of the families. I'm happy watching children as they play and learn from the teachers' fun activities.

Guess what are our hobbies
and our favourite foods!



Our teachers' work



SENSES EXPLORATION WITH MISS CALISTA

Natural materials are brilliant. They have good smell, different texture, colors and shapes. Children loved exploring, I can see different creative ideas generating every session!



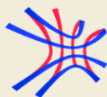
We explored the materials with our 5 senses!

CHINESE PAINTING AND CALLIGRAPHY ACTIVITY

Miss Mandy



When the children were exploring the Chinese ink and Chinese paintbrushes using their 5 senses (sight, smell, hearing, taste and touch), a child exclaimed "The Chinese ink smells yucky!". Still, he enjoyed painting with it so much that he drew a beautiful panda.





WHAT ARE WE DOING WITH KITCHEN TOOLS?

MISS TERESA



Children and parents took Kitchen tools and made many unique and beautiful creations. The children even came up with their own idea to decorate the mud Kitchen with colourful paint.

'CAI QING' AT PPDS

Miss Briella

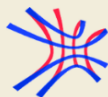
Our families enjoyed the fun of watching a dragon dance on stage. Children came up with the idea of performing 'Cai Qing' (採青), which was initiated and demonstrated by children during their play.

One parent said: 'I am glad that my son could have the opportunity to experience what dragon dance on stage is like. '



Daisy's Corner

I brought Yew Yew home when he was a baby turtle and he is 8 years old already. He like to eat a lot. Mui Mui is a new member, Yew Yew likes to play with her. They are slowly learning how to get along with each other.



From the families...

"I LIKE HOW THE CENTRE PROMOTES EXPLORATION AND INTERACTION THAT STIMULATE CHILDREN'S MINDS."

A family visiting for the first time

"THANK YOU FOR PROVIDING SUCH A GOOD PLACE!"

Caregiver of a frequent visiting child

"I AM GLAD THAT MY SON COULD HAVE THE OPPORTUNITY TO EXPERIENCE WHAT DRAGON DANCE ON STAGE IS LIKE. EVERY YEAR, HE WATCHES IT AND ALWAYS DOES THE PRETEND PLAY AT HOME!"

From a visiting mother

WORDS OF CHILDREN FROM DISCOVERY SPACE

01

"I want to come find you next time!"

02

"Today, I want to move the boat shop outdoors to play!"

03

"I like wrapping very much. I practice at home everyday. I use paper to wrap different toys at home but I do not have a tape holder at home. I think it is more convenient to have a tape holder."

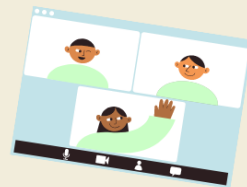
Discovery Space thanks you all!



What's New & Coming Soon

You can still play with us!

Discovery Space teachers are still working for you but for a little while it is going to be online! How exciting! We will be reading with you, doing experiments and engaging in a cookery session. Stay tuned to our Facebook page and find out more!



Facebook



Don't forget to visit and follow our Facebook page! This is an ideal way to share information and for parents/caregivers to keep up-to-date with what's going on in Discovery Space.



Pamela Peck Discovery Space
教育



Operational Days*

Pamela Peck Discovery Space operates seven days a week! We offer two sessions that last three hours each, one in the morning starting at 9:00 am, and one in the afternoon starting at 1:00 pm. We are excited to meet you all to play and learn in Discovery Space together.

*COVID-19 regulations affect the above arrangement

For the most updated information, please visit our Facebook page.

Contact Us



G/F, 2 Tin Wan Hill Road, Tin Wan, Aberdeen, Hong Kong



3977 9820



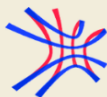
2338 4320



yccecdc@yccece.edu.hk

FOR MORE VISIT:

<https://discoveryspace.yccece.edu.hk/pamela-peck-discovery-space/>



YEW CHUNG COLLEGE
OF EARLY CHILDHOOD EDUCATION
耀中幼教學院